

2025

ACADEMIC RANKING OF WORLD UNIVERSITIES



Contents

▶ About ARWU	01
▶ Ranking Results	02
▶ Ranking Methodology	24
▶ Ranking Statistics	26

About ARWU

The Academic Ranking of World Universities (ARWU) was first published in June 2003 by the Center for World-Class Universities (CWCU), Graduate School of Education (formerly the Institute of Higher Education) of Shanghai Jiao Tong University, China, and updated on an annual basis. Since 2009 the Academic Ranking of World Universities (ARWU) has been published and copyrighted by ShanghaiRanking Consultancy. ShanghaiRanking Consultancy is a fully independent organization dedicating to research on higher education intelligence and consultation.

ARWU uses six objective indicators to rank world universities, including the number of alumni and staff winning Nobel Prizes and Fields Medals, number of highly cited researchers selected by Clarivate Analytics, number of articles published in journals of Nature and Science, number of articles indexed in Science Citation Index – Expanded and Social Sciences Citation Index, and per capita performance of a university. In total, more than 2500 universities are actually ranked and the best 1000 are published.

Although the initial purpose of ARWU was to find the global standing of top Chinese universities, it has attracted a great deal of attention from universities, governments and public media worldwide. ARWU has been reported by mainstream media in almost all major countries. Hundreds of universities cited the ranking results in their campus news, annual reports or promotional brochures. A survey on higher education published by The Economist in 2005 commented ARWU as “the most widely used annual ranking of the world’s research universities”. Burton Bollag, a reporter at Chronicle of Higher Education wrote that ARWU “is considered the most influential international ranking”.

One of the factors for the significant influence of ARWU is that its methodology is scientifically sound, stable and transparent. The EU Research Headlines reported ARWU work on 31st December 2003: “The universities were carefully evaluated using several indicators of research performance.” Chancellor of Oxford University, Chris Patten, said “it looks like a pretty good stab at a fair comparison.” Professor Simon Marginson of Institute of Education, University of London commented that one of the strengths of “the academically rigorous and globally inclusive Jiao Tong approach” is “constantly tuning its rankings and invites open collaboration in that”.

ARWU and its content have been widely cited and employed as a starting point for identifying national strengths and weaknesses as well as facilitating reform and setting new initiatives. Bill Destler, the President of the Rochester Institute of Technology, drew reference to ARWU to analyze the comparative advantages that the Western Europe and US have in terms of intellectual talent and creativity in his publication in the journal Nature. Martin Enserink referred to ARWU and argued in his paper published in Science that “France’s poor showing in the Shanghai ranking ... helped trigger a national debate about higher education that resulted in a new law... giving universities more freedom”.

2025

ACADEMIC RANKING OF WORLD UNIVERSITIES TOP500



WORLD TOP 500 UNIVERSITIES

World Rank 2025	World Rank 2024	Institution*	Country / Region	National/Regional Rank	Score on Alumni	Score on Award	Score on HiCi	Score on N&S	Score on PUB	Score on PCP	Total Score
1	1	Harvard University	US	1	100.0	96.2	100.0	100.0	96.8	84.5	100.0
2	2	Stanford University	US	2	44.4	86.3	75.6	88.3	71.5	57.4	76.8
3	3	Massachusetts Institute of Technology	US	3	73.0	84.4	57.4	73.6	56.9	73.9	71.2
4	4	University of Cambridge	GB	1	80.4	89.0	44.6	63.5	66.1	59.4	68.6
5	5	University of California, Berkeley	US	4	66.6	74.9	47.0	64.0	54.1	53.5	61.8
6	6	University of Oxford	GB	2	50.5	58.5	51.4	61.2	75.7	48.0	61.0
7	7	Princeton University	US	5	60.1	100.0	27.1	52.7	41.3	74.2	59.4
8	8	Columbia University	US	6	58.3	61.9	46.1	54.0	64.0	31.0	55.8
9	8	California Institute of Technology	US	7	54.7	62.1	31.6	58.7	39.5	100.0	55.5
10	10	University of Chicago	US	8	60.1	84.3	30.2	44.2	52.8	43.0	54.2
11	11	Yale University	US	9	51.5	48.6	47.0	57.1	62.6	38.0	53.6
12	12	Cornell University	US	10	42.6	43.3	37.8	56.2	61.4	42.8	49.8
13	12	Paris-Saclay University	FR	1	37.4	72.3	32.9	29.3	62.5	45.1	49.1
14	16	University College London	GB	3	30.6	30.8	51.4	44.5	76.5	34.1	48.5
14	14	University of Pennsylvania	US	11	31.4	38.8	47.4	46.6	66.2	40.8	48.5
16	15	University of California, Los Angeles	US	12	29.3	44.1	43.1	52.9	64.2	28.0	48.0
17	18	University of Washington	US	13	22.2	35.5	42.1	54.5	68.2	25.2	46.2
18	22	Tsinghua University	CN	1	8.8	0.0	63.5	49.5	88.1	35.4	46.0
19	17	Johns Hopkins University	US	14	33.4	33.9	45.6	38.6	72.2	27.9	45.5
20	18	University of California, San Diego	US	15	17.7	31.7	49.2	55.8	58.6	31.4	45.3
21	20	Univ California – San Francisco	US	16	0.0	41.0	46.5	57.2	57.5	29.6	44.7
22	21	ETH Zurich	CH	1	26.0	41.4	28.7	54.1	52.7	47.8	44.1
23	24	Peking University	CN	2	10.2	0.0	47.4	48.8	88.8	32.1	42.5
24	27	Zhejiang University	CN	3	0.0	0.0	47.9	42.0	100.0	28.3	42.0
25	26	University of Toronto	CA	1	16.1	23.9	38.9	36.2	79.1	30.0	41.5
26	25	Imperial College London	GB	4	12.5	30.6	39.5	37.8	62.5	39.0	40.4
26	23	Washington University in St Louis	US	17	20.4	26.8	47.0	42.9	51.1	35.6	40.4
28	31	New York University	US	18	26.0	34.4	31.6	42.0	58.1	19.6	38.9
29	29	Rockefeller University	US	19	15.3	56.4	26.3	45.2	14.8	74.5	38.7
30	38	Shanghai Jiao Tong University	CN	4	0.0	0.0	37.8	33.1	97.8	28.3	37.7
31	33	Northwestern University	US	20	12.5	25.3	39.5	40.5	56.4	28.5	37.5
31	28	The University of Tokyo	JP	1	35.7	23.0	16.1	46.2	67.0	23.2	37.5
33	30	University of Michigan, Ann Arbor	US	21	36.4	9.6	31.6	39.7	71.4	22.2	37.4
34	33	PSL University	FR	2	49.4	44.1	11.4	25.9	50.5	49.0	37.3
35	32	University of Copenhagen	DK	1	18.4	20.2	29.4	40.4	63.7	35.6	37.2
36	36	University of Wisconsin, Madison	US	22	27.4	30.6	25.5	36.1	59.0	23.5	36.4
37	40	The University of Edinburgh	GB	5	27.9	22.1	38.9	31.4	53.3	27.1	35.7
38	37	The University of Melbourne	AU	1	14.4	11.1	41.1	27.1	70.3	30.5	35.5
39	35	Univ North Carolina – Chapel Hill	US	23	7.2	21.5	37.2	36.0	56.7	30.1	35.0
40	42	Univ Sci & Tech China	CN	5	0.0	0.0	40.6	36.9	76.7	30.8	34.9
41	50	Fudan University	CN	6	0.0	0.0	38.9	33.6	81.0	27.5	34.5
42	43	University of Munich	DE	1	24.4	18.8	27.1	33.9	53.6	42.4	34.4
43	41	Sorbonne University	FR	3	38.7	22.9	20.8	30.5	59.2	27.3	34.3
44	55	Swiss Fed Inst Tech – Lausanne	CH	2	0.0	28.5	27.1	44.2	39.0	52.7	34.1
45	47	Technical University of Munich	DE	2	33.4	16.9	25.5	28.7	52.8	46.4	33.7
46	39	Duke University	US	24	19.1	17.5	28.7	38.8	58.0	20.9	33.6
46	45	Kyoto University	JP	2	33.0	38.0	18.6	25.8	53.3	21.1	33.6
46	52	The University of Manchester	GB	6	19.7	28.5	22.8	31.7	55.9	28.0	33.6
49	45	The University of Texas at Austin	US	25	22.8	21.2	31.6	30.7	53.4	27.9	33.4
50	43	Karolinska Institute	SE	1	22.2	23.3	21.8	25.6	53.3	49.5	32.9

* Institutions within the same rank range are listed alphabetically.

WORLD TOP 500 UNIVERSITIES

World Rank 2025	World Rank 2024	Institution*	Country / Region	National/Regional Rank	Score on Alumni	Score on Award	Score on HiCi	Score on N&S	Score on PUB	Score on PCP	Total Score
51	50	Heidelberg University	DE	3	17.7	20.7	22.8	31.6	50.9	48.2	32.7
51	47	University of Minnesota, Twin Cities	US	26	25.5	14.7	34.2	28.3	57.9	21.6	32.7
53	47	University of British Columbia	CA	2	13.5	16.9	30.9	29.1	61.9	22.8	32.3
53	55	Univ Illinois – Urbana Champaign	US	27	25.0	32.3	17.4	31.4	50.5	25.1	32.3
55	58	University of Maryland, College Park	US	28	16.9	18.1	33.5	34.7	46.2	30.7	32.2
56	68	National University of Singapore	SG	1	0.0	0.0	43.6	30.1	64.5	35.1	32.1
56	55	Utrecht University	NL	1	20.4	16.9	35.4	24.9	55.1	26.3	32.1
58	58	University of Geneva	CH	3	36.8	36.5	13.2	27.1	41.0	36.8	31.9
58	54	Univ Texas Southwestern Med Center	US	29	16.9	30.8	28.7	35.0	39.1	25.1	31.9
60	60	Université Paris Cité	FR	4	14.8	9.9	34.8	31.2	58.7	25.1	31.8
61	53	King's College London	GB	7	22.8	16.5	37.8	18.6	55.6	27.3	31.7
62	65	University of Colorado Boulder	US	30–31	11.4	30.7	20.8	34.9	41.9	31.8	30.9
62	66	Vanderbilt University	US	30–31	20.4	25.5	24.6	23.5	49.4	33.5	30.9
64	67	University of Zurich	CH	4	0.0	20.2	25.5	32.9	52.8	35.9	30.8
65	72	Sun Yat-sen University	CN	7	0.0	0.0	27.9	20.4	87.6	25.4	30.6
65	63	The University of Queensland	AU	2	11.4	0.0	41.1	23.9	61.3	33.0	30.6
67	69	The University of Hong Kong	HK	1	0.0	0.0	48.3	28.4	56.3	29.6	30.5
68	61	University of Bonn	DE	4	29.7	32.3	17.4	20.4	40.7	40.4	30.1
68	62	University of Southern California	US	32	0.0	28.5	29.4	24.4	51.6	24.0	30.1
70	64	Univ California – Santa Barbara	US	33	13.5	35.2	16.1	36.9	32.9	34.8	30.0
71	69	Weizmann Institute of Science	IL	1	16.1	14.7	34.2	40.8	23.5	45.2	29.7
72	74	University of Sydney	AU	3	12.5	0.0	34.8	22.0	64.6	28.0	29.2
73	79	Huazhong Univ Sci & Tech	CN	8	0.0	0.0	30.2	20.2	78.9	23.1	29.0
73	69	University of Groningen	NL	2	12.5	22.1	22.8	22.9	53.2	26.6	29.0
75	82	Nanjing University	CN	9	0.0	0.0	29.4	29.6	67.7	26.4	28.8
76	78	KU Leuven	BE	1	0.0	0.0	34.2	29.5	58.7	33.0	28.6
76	74	McGill University	CA	3	28.8	0.0	25.5	28.8	57.2	26.0	28.6
76	82	Monash University	AU	4	0.0	0.0	30.9	27.3	65.4	30.0	28.6
79	76	University of California, Irvine	US	34	14.4	26.3	20.8	26.8	45.3	23.3	28.5
80	77	The University of New South Wales	AU	5	0.0	0.0	36.6	25.3	61.3	29.4	28.4
81	86	Seoul National University	KR	1	15.3	0.0	23.7	25.3	67.6	25.8	28.3
81	89	Wuhan University	CN	10	0.0	0.0	31.6	24.2	71.5	20.6	28.3
83	82	Ohio State University, Columbus	US	35	10.2	16.5	24.6	21.6	60.7	16.4	28.2
83	72	University of Oslo	NO	1	24.4	28.5	16.1	14.4	51.6	27.7	28.2
85	80	Aarhus University	DK	2	10.2	19.8	17.4	26.7	53.3	27.6	28.1
86	86	Univ Texas M.D. Anderson Cancer Center	US	36	0.0	13.5	36.0	22.9	36.2	54.2	28.0
87	98	Sichuan University	CN	11	0.0	0.0	22.8	17.0	82.9	23.1	27.7
88	90	Nanyang Technological University	SG	2	0.0	0.0	40.6	22.4	54.8	30.2	27.4
88	81	The Hebrew University of Jerusalem	IL	2	29.3	25.5	13.2	24.3	40.6	29.7	27.4
88	90	University of Pittsburgh	US	37	16.1	0.0	34.2	25.5	56.5	17.7	27.4
91	90	Ghent University	BE	2	0.0	9.0	32.2	20.0	54.2	32.7	27.2
92	95	Xi'an Jiaotong University	CN	12	0.0	0.0	24.6	15.9	79.7	22.6	27.1
93	88	Uppsala University	SE	2	19.7	20.2	11.4	26.8	49.5	26.8	27.0
94	95	University of Basel	CH	5	21.0	13.8	18.6	28.6	39.2	38.5	26.8
94	99	University of Helsinki	FI	1	15.3	15.6	17.4	24.3	51.8	26.4	26.8
96	94	Central South University	CN	13	0.0	0.0	25.5	10.5	80.9	24.0	26.6
97	85	Technion Israel Inst Tech	IL	3	21.6	34.2	11.4	20.4	33.1	37.9	26.5
98	97	University of Bristol	GB	8	5.1	12.8	27.9	27.3	44.4	26.6	26.4
99	101–150	City University of Hong Kong	HK	2	0.0	0.0	40.0	21.1	50.5	31.6	26.3
100	101–150	Stockholm University	SE	3	20.4	22.1	14.7	27.3	39.6	25.9	26.1

* Institutions within the same rank range are listed alphabetically.

WORLD TOP 500 UNIVERSITIES

World Rank 2025	World Rank 2024	Institution*	Country / Region	National/Regional Rank	Score on Alumni	Score on Award	Score on HiCi	Score on N&S	Score on PUB	Score on PCP
101-150	151-200	Beihang University	CN	14-27	0.0	0.0	22.8	19.8	59.2	19.5
101-150	101-150	Beijing Institute of Technology	CN	14-27	0.0	0.0	37.2	16.1	61.6	23.1
101-150	151-200	Beijing Normal University	CN	14-27	14.4	0.0	21.8	15.5	56.9	20.5
101-150	101-150	Boston University	US	38-48	16.9	10.4	20.8	20.4	49.4	21.1
101-150	101-150	Brown University	US	38-48	23.4	17.9	13.2	20.7	43.6	32.4
101-150	101-150	Carnegie Mellon University	US	38-48	28.4	27.1	11.4	23.4	31.0	27.0
101-150	101-150	Emory University	US	38-48	0.0	0.0	24.6	23.8	51.0	25.7
101-150	101-150	Erasmus University Rotterdam	NL	3-6	13.5	12.8	27.1	14.7	49.6	31.2
101-150	101-150	Harbin Institute of Technology	CN	14-27	0.0	0.0	23.7	16.3	75.0	21.3
101-150	101-150	Mt Sinai Sch Med	US	38-48	0.0	0.0	37.2	30.7	40.7	17.3
101-150	151-200	Indiana University, Bloomington	US	38-48	15.3	18.1	24.6	13.0	36.3	20.5
101-150	151-200	Institute of Science Tokyo	JP	3-4	11.4	27.1	9.3	16.0	40.7	26.8
101-150	101-150	Jilin University	CN	14-27	0.0	0.0	21.8	15.4	67.5	17.4
101-150	90	King Saud University	SA	1	0.0	0.0	22.8	6.4	80.5	24.8
101-150	101-150	Leiden University	NL	3-6	14.4	0.0	30.2	21.7	50.7	25.8
101-150	101-150	Lund University	SE	4	17.7	16.5	19.7	18.8	49.2	24.1
101-150	101-150	Mayo Clinic Coll Med & Sci	US	38-48	0.0	0.0	37.2	16.1	47.8	26.4
101-150	101-150	McMaster University	CA	4-5	17.7	16.9	27.1	11.7	43.9	29.2
101-150	101-150	Moscow State University	RU	1	37.1	28.5	0.0	11.2	44.9	25.4
101-150	101-150	Nagoya University	JP	3-4	26.5	23.0	9.3	17.6	42.0	18.7
101-150	101-150	Northwestern Polytechnical University	CN	14-27	0.0	0.0	34.8	9.2	59.9	22.1
101-150	101-150	Penn State Univ – University Pk	US	38-48	8.8	0.0	21.8	35.1	47.0	18.7
101-150	100	Purdue University, West Lafayette	US	38-48	11.4	20.5	18.6	19.5	49.5	23.2
101-150	101-150	Radboud University Nijmegen	NL	3-6	15.3	0.0	22.8	23.3	47.0	27.5
101-150	101-150	Rice University	US	38-48	18.4	19.5	21.8	22.3	28.5	31.4
101-150	101-150	Sapienza University of Rome	IT	1	14.4	22.1	6.6	14.1	51.7	19.6
101-150	101-150	Shandong University	CN	14-27	0.0	0.0	21.8	16.0	77.0	19.0
101-150	151-200	Soochow University (China)	CN	14-27	0.0	0.0	31.6	12.9	59.9	19.0
101-150	101-150	South China University of Technology	CN	14-27	0.0	0.0	30.2	11.0	62.4	22.4
101-150	101-150	Southeast University	CN	14-27	0.0	0.0	29.4	10.4	74.5	22.9
101-150	101-150	South Univ Sci Tech China	CN	14-27	0.0	0.0	26.3	27.9	50.5	37.9
101-150	101-150	The Australian National University	AU	6-7	12.5	17.1	21.8	24.3	42.3	28.4
101-150	101-150	The Chinese University of Hong Kong	HK	3	0.0	12.8	25.5	11.2	57.2	25.7
101-150	101-150	The University of Warwick	GB	9-12	18.4	27.1	9.3	20.1	40.9	26.5
101-150	101-150	The University of Western Australia	AU	6-7	19.1	12.8	19.7	13.3	45.5	31.2
101-150	101-150	Tianjin University	CN	14-27	0.0	0.0	32.9	13.0	67.5	23.0
101-150	151-200	Tongji University	CN	14-27	0.0	0.0	14.7	11.7	73.1	22.1
101-150	101-150	Université libre de Bruxelles (ULB)	BE	3	17.7	23.9	11.4	19.3	31.6	33.6
101-150	101-150	University of Alberta	CA	4-5	10.2	15.6	20.8	18.2	53.4	26.3
101-150	101-150	University of Amsterdam	NL	3-6	0.0	0.0	28.7	23.2	51.4	22.3
101-150	101-150	University of California, Davis	US	38-48	12.5	0.0	19.7	25.4	51.1	20.0
101-150	101-150	University of Freiburg	DE	5	20.4	14.3	18.6	21.5	38.0	39.6
101-150	101-150	University of Glasgow	GB	9-12	14.4	0.0	26.3	21.5	45.0	24.0
101-150	101-150	University of Lausanne	CH	6	16.1	15.6	14.7	23.9	35.8	23.9
101-150	101-150	University of Liverpool	GB	9-12	14.4	9.0	16.1	20.2	46.5	24.9
101-150	101-150	University of Nottingham	GB	9-12	18.4	18.1	17.4	17.7	43.3	22.7
101-150	101-150	University of Sao Paulo	BR	1	0.0	0.0	16.1	17.7	68.1	17.0
101-150	101-150	University of Strasbourg	FR	5	25.5	29.6	6.6	19.2	33.9	22.1
101-150	101-150	University of Vienna	AT	1	16.1	11.7	17.4	27.8	38.8	32.5
101-150	151-200	Xiamen University	CN	14-27	0.0	0.0	22.8	18.7	58.4	20.0

* Institutions within the same rank range are listed alphabetically.

WORLD TOP 500 UNIVERSITIES

World Rank 2025	World Rank 2024	Institution*	Country / Region	National/Regional Rank	Score on Alumni	Score on Award	Score on HiCi	Score on N&S	Score on PUB	Score on PCP
151-200	101-150	Aix Marseille University	FR	6-8	16.1	0.0	18.6	23.5	49.0	19.4
151-200	151-200	Arizona State University	US	49-58	0.0	18.1	13.2	21.8	40.7	17.2
151-200	151-200	Case Western Reserve University	US	49-58	29.3	9.0	20.8	13.7	36.6	25.8
151-200	201-300	China Agricultural University	CN	28-35	0.0	0.0	32.9	10.7	48.1	21.1
151-200	151-200	Chongqing University	CN	28-35	0.0	0.0	20.8	9.5	63.5	19.6
151-200	201-300	Dalian University of Technology	CN	28-35	0.0	0.0	19.7	6.1	59.5	20.7
151-200	151-200	Delft University of Technology	NL	7-9	10.2	0.0	13.2	26.5	41.9	20.7
151-200	151-200	Georgia Institute of Technology	US	49-58	11.4	0.0	19.7	21.0	39.9	27.3
151-200	151-200	Goethe University Frankfurt	DE	6-11	31.0	0.0	13.2	21.0	38.2	33.6
151-200	151-200	Hunan University	CN	28-35	0.0	0.0	29.4	10.9	53.0	20.2
151-200	151-200	Michigan State University	US	49-58	7.2	0.0	14.7	22.9	48.7	18.2
151-200	151-200	Nankai University	CN	28-35	0.0	0.0	28.7	15.3	52.3	19.9
151-200	151-200	Norwegian Univ Sci & Tech	NO	2	11.4	19.1	11.4	13.1	43.5	19.1
151-200	201-300	Peking Union Medical College	CN	28-35	0.0	0.0	19.7	12.3	51.1	31.7
151-200	101-150	Rutgers State Univ - New Brunswick	US	49-58	7.2	15.6	20.8	19.5	42.4	15.3
151-200	151-200	Sungkyunkwan University	KR	2-3	0.0	0.0	20.8	17.0	49.9	23.6
151-200	151-200	Technical University of Denmark	DK	3	13.5	9.0	21.8	19.0	38.0	20.8
151-200	151-200	The Hong Kong Polytechnic University	HK	4	0.0	0.0	24.6	12.5	62.0	21.1
151-200	151-200	London Sch Economics	GB	13-18	29.3	14.7	11.4		29.9	30.0
151-200	151-200	The University of Adelaide	AU	8	12.5	0.0	30.9	14.2	42.4	31.6
151-200	151-200	The University of Calgary	CA	6-8	0.0	0.0	24.6	15.3	46.1	20.8
151-200	151-200	The University of Sheffield	GB	13-18	16.1	11.1	14.7	18.4	42.3	22.8
151-200	101-150	Université Grenoble Alpes	FR	6-8	11.4	12.8	13.2	23.3	44.2	20.1
151-200	151-200	University of Arizona	US	49-58	13.5	0.0	11.4	26.8	46.3	20.6
151-200	151-200	University of Barcelona	ES	1	0.0	0.0	18.6	15.2	49.2	27.4
151-200	101-150	University of Bern	CH	7	11.4	0.0	17.4	23.9	45.6	32.7
151-200	151-200	University of Birmingham	GB	13-18	16.1	6.4	14.7	19.8	47.5	22.5
151-200	151-200	University of California, Santa Cruz	US	49-58	0.0	0.0	30.9	28.2	28.1	33.0
151-200	151-200	University of Cologne	DE	6-11	0.0	9.0	16.1	22.7	38.6	31.8
151-200	151-200	Univ Elect Sci & Technol China	CN	28-35	0.0	0.0	25.5	14.0	57.6	19.1
151-200	151-200	University of Exeter	GB	13-18	0.0	0.0	28.7	24.0	40.6	25.3
151-200	101-150	University of Florida	US	49-58	15.3	0.0	11.4	19.9	59.3	21.0
151-200	151-200	University of Goettingen	DE	6-11	28.8	0.0	16.1	26.7	33.2	35.9
151-200	101-150	University of Gothenburg	SE	5	0.0	13.8	23.7	17.5	43.7	22.5
151-200	151-200	University of Leeds	GB	13-18	15.3	0.0	13.2	22.8	44.2	20.9
151-200	151-200	University of Mainz	DE	6-11	0.0	6.4	18.6	20.9	35.1	34.8
151-200	201-300	Univ Massachusetts Chan Med Sch	US	49-58	0.0	27.1	14.7	20.8	24.5	21.2
151-200	151-200	University of Milan	IT	2-3	15.3	0.0	18.6	14.7	48.3	21.3
151-200	151-200	University of Montpellier	FR	6-8	8.8	0.0	13.2	21.8	44.8	22.7
151-200	151-200	University of Montreal	CA	6-8	10.2	0.0	16.1	21.6	50.1	24.0
151-200	151-200	University of Muenster	DE	6-11	17.7	9.0	11.4	19.5	34.1	27.9
151-200	201-300	University of Padua	IT	2-3	0.0	0.0	18.6	15.4	52.1	21.7
151-200	151-200	University of Southampton	GB	13-18	0.0	0.0	22.8	20.5	41.7	23.6
151-200	151-200	University of Tuebingen	DE	6-11	20.4	0.0	17.4	22.0	39.0	35.1
151-200	101-150	University of Utah	US	49-58	0.0	10.4	13.2	23.6	48.2	20.4
151-200	151-200	University of Waterloo	CA	6-8	0.0	13.5	23.7	10.8	41.0	21.8
151-200	151-200	Vrije Universiteit Amsterdam	NL	7-9	0.0	0.0	19.7	18.0	46.8	22.6
151-200	151-200	Wageningen University & Research	NL	7-9	0.0	0.0	32.9	18.8	39.9	29.3
151-200	201-300	Yonsei University	KR	2-3	14.4	0.0	14.7	14.0	56.1	21.1
151-200	151-200	Zhengzhou University	CN	28-35	0.0	0.0	19.7	8.8	68.3	17.9

* Institutions within the same rank range are listed alphabetically.

WORLD TOP 500 UNIVERSITIES

World Rank 2025	World Rank 2024	Institution*	Country / Region	National/Regional Rank	Score on Alumni	Score on Award	Score on HiCi	Score on N&S	Score on PUB	Score on PCP
201-300	201-300	Baylor College of Medicine	US	59-78	0.0	0.0	20.8	24.7	40.1	15.4
201-300	201-300	Beijing Univ Chemical Tech	CN	36-54	0.0	0.0	20.8	8.5	38.2	19.0
201-300	301-400	Beijing University of Technology	CN	36-54	0.0	0.0	9.3	11.3	47.6	17.2
201-300	201-300	Capital Medical University	CN	36-54	0.0	0.0	6.6	10.0	59.7	34.7
201-300	151-200	Cardiff University	GB	19-26	0.0	14.7	13.2	19.4	37.5	21.1
201-300	201-300	Catholic University of Louvain	BE	4	8.8	11.7	17.4	12.0	28.3	24.6
201-300	201-300	China University of Geosciences	CN	36-54	0.0	0.0	19.7	9.9	46.5	18.5
201-300	201-300	Claude Bernard University Lyon 1	FR	9-12	8.8	0.0	11.4	20.4	38.1	19.7
201-300	201-300	Curtin University	AU	9-13	0.0	0.0	14.7	16.8	39.5	26.7
201-300	201-300	Deakin University	AU	9-13	0.0	0.0	20.8	9.9	41.5	24.5
201-300	201-300	Dresden University of Technology	DE	12-21	0.0	0.0	19.7	14.7	41.1	33.7
201-300	301-400	Durham University	GB	19-26	0.0	0.0	14.7	15.2	35.1	20.0
201-300	201-300	East China Normal University	CN	36-54	0.0	0.0	14.7	14.7	45.7	16.3
201-300	301-400	East China Univ Sci Technol	CN	36-54	0.0	0.0	18.6	7.7	43.2	18.2
201-300	201-300	George Mason University	US	59-78	0.0	28.5	6.6	10.5	28.9	18.6
201-300	301-400	Hanyang University	KR	4-6	0.0	0.0	17.4	9.3	42.1	19.2
201-300	201-300	Heinrich Heine University Duesseldorf	DE	12-21	10.2	0.0	18.6	13.0	30.5	35.3
201-300	201-300	Hokkaido University	JP	5-10	10.2	14.7	0.0	15.6	39.7	15.2
201-300	301-400	Huazhong Agricultural University	CN	36-54	0.0	0.0	17.4	12.5	38.0	15.9
201-300	301-400	Institut polytechnique de Paris	FR	9-12	19.7	15.1	6.6	11.7	30.9	30.0
201-300	301-400	Keio University	JP	5-10	0.0	0.0	17.4	16.3	33.9	17.5
201-300	201-300	Kiel University	DE	12-21	7.2	9.0	16.1	11.3	29.3	27.5
201-300	201-300	King Abdullah Univ Sci Tech	SA	2	0.0	0.0	27.1	19.6	31.1	19.2
201-300	201-300	Korea Advanced Inst Sci & Tech	KR	4-6	0.0	0.0	6.6	22.4	36.5	26.7
201-300	201-300	Korea University	KR	4-6	0.0	0.0	14.7	11.0	54.1	21.9
201-300	201-300	KTH Royal Institute of Technology	SE	6	0.0	12.8	11.4	12.9	35.9	27.3
201-300	201-300	Kyushu University	JP	5-10	0.0	0.0	11.4	16.4	41.9	15.3
201-300	201-300	Lanzhou University	CN	36-54	0.0	0.0	11.4	10.6	52.4	18.1
201-300	151-200	London Sch Hygiene & Tropical Med	GB	19-26	5.1	0.0	25.5	13.8	32.8	34.1
201-300	201-300	Macquarie University	AU	9-13	0.0	0.0	9.3	17.4	37.6	25.4
201-300	201-300	Medical University of Vienna	AT	2-4	7.2	0.0	16.1	18.3	36.2	27.7
201-300	301-400	Nanjing Agricultural University	CN	36-54	0.0	0.0	21.8	9.1	41.0	17.7
201-300	201-300	Nanjing Medical University	CN	36-54	0.0	0.0	9.3	10.6	54.4	26.0
201-300	201-300	Nanjing Univ Aeronaut Astronaut	CN	36-54	0.0	0.0	14.7	5.7	48.7	17.1
201-300	301-400	Nanjing Univ Sci & Tech	CN	36-54	0.0	0.0	18.6	6.5	48.0	17.0
201-300	201-300	Univ Nacl Autonoma Mexico	MX	1	11.4	0.0	0.0	14.2	49.9	22.1
201-300	201-300	National Taiwan University	TW	1	10.2	0.0	11.4	8.7	48.9	18.6
201-300	201-300	Newcastle University	GB	19-26	0.0	0.0	13.2	18.9	40.3	20.6
201-300	201-300	North Carolina State Univ - Raleigh	US	59-78	0.0	0.0	16.1	15.4	38.5	17.6
201-300	201-300	Northeastern University (Boston)	US	59-78	0.0	0.0	17.4	17.9	32.4	17.4
201-300	201-300	Northeastern University (Shenyang)	CN	36-54	0.0	0.0	9.3	7.2	54.8	17.1
201-300	301-400	Northwest A&F University	CN	36-54	0.0	0.0	18.6	8.1	43.0	15.2
201-300	201-300	Oregon Health & Science University	US	59-78	0.0	0.0	16.1	17.1	34.0	17.8
201-300	201-300	Oregon State University	US	59-78	7.2	0.0	13.2	19.8	31.6	22.1
201-300	201-300	Osaka University	JP	5-10	16.9	0.0	6.6	19.0	47.7	15.0
201-300	201-300	Queen Mary University of London	GB	19-26	15.3	0.0	13.2	18.7	40.7	22.8
201-300	201-300	Queen's University	CA	9-10	12.5	19.1	11.4	9.3	33.4	23.2
201-300	201-300	Ruhr University Bochum	DE	12-21	0.0	0.0	14.7	11.1	36.0	29.5
201-300	201-300	RWTH Aachen University	DE	12-21	0.0	0.0	13.2	20.1	43.1	35.6
201-300	201-300	Shanghai University	CN	36-54	0.0	0.0	14.7	9.8	51.5	15.2

* Institutions within the same rank range are listed alphabetically.

WORLD TOP 500 UNIVERSITIES

World Rank 2025	World Rank 2024	Institution*	Country / Region	National/Regional Rank	Score on Alumni	Score on Award	Score on HiCi	Score on N&S	Score on PUB	Score on PCP
201-300	151-200	Shenzhen University	CN	36-54	0.0	0.0	16.1	10.1	58.6	18.9
201-300	301-400	Southern Medical University	CN	36-54	0.0	0.0	9.3	3.6	51.2	25.6
201-300	201-300	Swinburne University of Technology	AU	9-13	0.0	0.0	21.8	13.9	28.4	30.0
201-300	201-300	Technical University of Berlin	DE	12-21	12.5	0.0	11.4	15.9	29.5	30.2
201-300	201-300	Tel Aviv University	IL	4	0.0	0.0	11.4	21.9	47.9	26.9
201-300	201-300	Texas A&M University	US	59-78	0.0	0.0	13.2	22.9	48.2	20.1
201-300	201-300	Hong Kong Univ Sci & Tech	HK	5	0.0	0.0	19.7	12.5	42.9	23.0
201-300	201-300	The University of Auckland	NZ	1	12.5	0.0	17.4	9.8	40.6	22.7
201-300	201-300	The University of Tennessee, Knoxville	US	59-78	8.8	0.0	11.4	13.0	37.4	18.4
201-300	301-400	Univ Texas Health Sci Center – Houston	US	59-78	0.0	13.8	11.4	13.8	31.7	14.4
201-300	201-300	Tohoku University	JP	5-10	13.5	0.0	9.3	16.6	47.4	15.0
201-300	201-300	Trinity College Dublin	IE	1	12.5	11.1	16.1	14.5	33.4	17.8
201-300	151-200	Tufts University	US	59-78	16.9	14.3	14.7	11.7	31.3	23.1
201-300	201-300	University of Aberdeen	GB	19-26	0.0	11.1	19.7	9.4	27.0	22.9
201-300	201-300	University of Bergen	NO	3	13.5	0.0	6.6	17.6	35.7	21.2
201-300	201-300	University of Bologna	IT	4-7	0.0	0.0	14.7	12.7	53.2	19.0
201-300	201-300	University of Bordeaux	FR	9-12	12.5	0.0	6.6	20.0	36.6	18.1
201-300	201-300	University of Buenos Aires	AR	1	11.4	20.2	6.6	7.8	31.1	16.5
201-300	201-300	University of California, Riverside	US	59-78	11.4	0.0	17.4	22.1	31.7	24.3
201-300	201-300	University of Cape Town	ZA	1-2	16.1	0.0	14.7	13.9	36.7	18.3
201-300	201-300	University of Colorado at Denver	US	59-78	0.0	0.0	16.1	22.4	45.6	15.4
201-300	301-400	University of Connecticut	US	59-78	10.2	0.0	11.4	17.6	36.6	15.4
201-300	201-300	University of Delaware	US	59-78	8.8	14.7	11.4	9.4	29.5	17.5
201-300	201-300	University of Erlangen–Nuremberg	DE	12-21	0.0	0.0	13.2	19.0	38.4	29.4
201-300	201-300	University of Hamburg	DE	12-21	13.5	0.0	9.3	21.8	37.8	28.0
201-300	201-300	University of Houston	US	59-78	0.0	0.0	16.1	12.9	36.8	21.3
201-300	201-300	University of Innsbruck	AT	2-4	0.0	6.4	13.2	19.2	27.1	28.2
201-300	201-300	University of Leipzig	DE	12-21	8.8	9.0	13.2	14.4	34.0	30.5
201-300	201-300	University of Lisbon	PT	1-2	0.0	6.4	9.3	13.0	49.5	18.0
201-300	201-300	University of Lorraine	FR	9-12	10.2	12.8	11.4	11.6	34.1	14.2
201-300	201-300	University of Massachusetts, Amherst	US	59-78	12.5	0.0	16.1	19.8	33.3	21.3
201-300	201-300	University of Missouri, Columbia	US	59-78	7.2	13.5	14.7	11.3	35.2	16.0
201-300	201-300	University of Naples Federico II	IT	4-7	0.0	0.0	11.4	9.9	48.5	18.5
201-300	201-300	University of Ottawa	CA	9-10	0.0	0.0	20.8	11.8	44.0	21.5
201-300	151-200	University of Pisa	IT	4-7	19.1	20.2	6.6	7.6	39.8	22.6
201-300	201-300	University of Porto	PT	1-2	0.0	0.0	9.3	13.0	45.2	20.6
201-300	151-200	University of Rochester	US	59-78	30.2	5.2	9.3	19.7	36.4	15.8
201-300	201-300	Univ Sci Technol Beijing	CN	36-54	0.0	0.0	16.1	8.8	52.1	19.6
201-300	201-300	University of Sussex	GB	19-26	0.0	19.8	13.2	11.4	28.7	22.4
201-300	201-300	University of Technology Sydney	AU	9-13	0.0	0.0	21.8	10.0	39.7	25.9
201-300	301-400	University of the Witwatersrand	ZA	1-2	16.1	0.0	11.4	13.6	36.4	17.7
201-300	201-300	University of Tsukuba	JP	5-10	0.0	17.3	0.0	15.3	35.1	16.3
201-300	201-300	University of Turin	IT	4-7	12.5	0.0	13.2	10.4	45.6	19.7
201-300	201-300	University of Valencia	ES	2	0.0	0.0	11.4	11.0	44.0	17.8
201-300	201-300	University of Virginia	US	59-78	0.0	0.0	17.4	24.0	42.8	17.3
201-300	201-300	University of Wuerzburg	DE	12-21	17.7	0.0	13.2	20.4	33.0	31.8
201-300	301-400	University of York	GB	19-26	13.5	0.0	9.3	17.2	33.7	21.4
201-300	301-400	Vienna University of Technology	AT	2-4	14.4	0.0	11.4	16.7	25.7	28.9
201-300	201-300	Virginia Tech	US	59-78	10.2	0.0	16.1	17.4	39.4	17.5
201-300	201-300	Wuhan University of Technology	CN	36-54	0.0	0.0	22.8	8.5	48.1	16.0

* Institutions within the same rank range are listed alphabetically.

WORLD TOP 500 UNIVERSITIES

World Rank 2025	World Rank 2024	Institution*	Country / Region	National/Regional Rank	Score on Alumni	Score on Award	Score on HiCi	Score on N&S	Score on PUB	Score on PCP
301-400	401-500	Aalborg University	DK	4-5	0.0	0.0	14.7	6.7	36.4	16.8
301-400	301-400	Albert Einstein College of Medicine	US	79-96	0.0	0.0	9.3	15.8	26.2	30.1
301-400	301-400	Anhui University	CN	55-82	0.0	0.0	13.2	7.2	39.1	13.4
301-400	301-400	Autonomous University of Barcelona	ES	3-8	0.0	0.0	0.0	11.0	44.3	26.4
301-400	301-400	Autonomous University of Madrid	ES	3-8	0.0	0.0	6.6	10.5	38.2	20.6
301-400	301-400	Ben-Gurion University of the Negev	IL	5	0.0	0.0	9.3	14.0	32.5	20.9
301-400	301-400	Brandeis University	US	79-96	22.2	11.1	0.0	15.4	16.8	26.4
301-400	401-500	Chalmers University of Technology	SE	7-8	0.0	0.0	11.4	12.4	29.2	22.9
301-400	301-400	Charles University	CZ	1	0.0	0.0	0.0	11.9	44.6	19.6
301-400	301-400	China Univ Petroleum (East China)	CN	55-82	0.0	0.0	14.7	2.5	41.1	16.8
301-400	201-300	Colorado State University	US	79-96	0.0	0.0	13.2	17.9	34.7	18.7
301-400	301-400	Complutense University of Madrid	ES	3-8	16.1	0.0	0.0	11.7	45.2	16.5
301-400	301-400	Dalhousie University	CA	11-15	11.4	0.0	11.4	10.4	33.8	17.9
301-400	301-400	Dartmouth College	US	79-96	19.1	0.0	6.6	15.8	27.3	22.2
301-400	301-400	Ecole Normale Superieure - Lyon	FR	13-14	19.7	18.1	0.0	7.8	21.2	30.2
301-400	401-500	Eindhoven University of Technology	NL	10-11	0.0	0.0	11.4	12.5	31.4	21.2
301-400	301-400	Florida State University	US	79-96	0.0	0.0	9.3	15.1	35.2	18.0
301-400	501-600	Fujian Medical University	CN	55-82	0.0	0.0	6.6	2.5	43.7	29.7
301-400	201-300	Fuzhou University	CN	55-82	0.0	0.0	13.2	6.5	45.6	15.8
301-400	301-400	George Washington University	US	79-96	10.2	0.0	9.3	14.2	35.3	18.9
301-400	201-300	Griffith University	AU	14-20	0.0	0.0	11.4	13.0	38.5	22.7
301-400	301-400	Guangdong University of Technology	CN	55-82	0.0	0.0	11.4	2.1	44.7	14.9
301-400	301-400	Guangxi University	CN	55-82	0.0	0.0	6.6	7.2	47.3	16.6
301-400	401-500	Guangzhou Medical University	CN	55-82	0.0	0.0	11.4	7.4	39.9	19.8
301-400	401-500	Henan University	CN	55-82	0.0	0.0	11.4	10.1	39.2	11.9
301-400	301-400	Jiangnan University	CN	55-82	0.0	0.0	11.4	5.5	48.8	17.8
301-400	201-300	Jiangsu University	CN	55-82	0.0	0.0	6.6	3.1	54.1	16.6
301-400	201-300	Jinan University	CN	55-82	0.0	0.0	0.0	9.8	50.2	16.0
301-400	201-300	Karlsruhe Inst Technol	DE	22-27	0.0	0.0	6.6	9.7	38.8	35.7
301-400	401-500	Kunming Univ Sci Technol	CN	55-82	0.0	0.0	6.6	5.9	45.7	14.1
301-400	401-500	Kyung Hee University	KR	7-9	0.0	0.0	6.6	5.9	42.4	19.0
301-400	301-400	La Trobe University	AU	14-20	0.0	0.0	9.3	11.4	33.2	23.8
301-400	301-400	Lancaster University	GB	27-32	0.0	0.0	13.2	13.8	30.8	19.6
301-400	301-400	Laval University	CA	11-15	0.0	0.0	13.2	9.3	37.3	17.2
301-400	301-400	Linkoping University	SE	7-8	0.0	0.0	13.2	13.6	33.8	19.4
301-400	201-300	Maastricht University	NL	10-11	0.0	0.0	9.3	8.3	43.1	24.1
301-400	201-300	Nanchang University	CN	55-82	0.0	0.0	13.2	5.5	48.9	13.1
301-400	301-400	Nanjing Tech University	CN	55-82	0.0	0.0	11.4	13.2	42.0	15.4
301-400	301-400	Nanjing Univ Informat Sci & Technol	CN	55-82	0.0	0.0	17.4	7.0	42.1	15.1
301-400	401-500	Nanjing Univ Post	CN	55-82	0.0	0.0	17.4	3.1	38.6	14.7
301-400	301-400	Ocean University of China	CN	55-82	0.0	0.0	9.3	10.0	44.9	16.6
301-400	301-400	Paul Sabatier University (Toulouse 3)	FR	13-14	0.0	0.0	11.4	18.6	33.1	17.5
301-400	301-400	Pohang Univ Sci & Tech	KR	7-9	0.0	0.0	9.3	17.1	27.6	31.8
301-400	201-300	Polytechnic University of Milan	IT	8-12	5.1	12.8	0.0	9.4	37.4	19.3
301-400	301-400	Pompeu Fabra University	ES	3-8	0.0	0.0	6.6	18.5	26.8	31.3
301-400	301-400	Princess Nourah Bint Abdulrahman Univ	SA	3	0.0	0.0	11.4	2.5	41.8	18.3
301-400	301-400	Qingdao University	CN	55-82	0.0	0.0	9.3	4.0	48.8	15.8
301-400	301-400	Queen's University Belfast	GB	27-32	16.1	0.0	11.4	10.7	32.3	19.5
301-400	201-300	Queensland University of Technology	AU	14-20	0.0	0.0	17.4	9.7	35.6	21.2
301-400	301-400	Renmin University of China	CN	55-82	0.0	0.0	9.3		36.8	15.9

* Institutions within the same rank range are listed alphabetically.

WORLD TOP 500 UNIVERSITIES

World Rank 2025	World Rank 2024	Institution*	Country / Region	National/Regional Rank	Score on Alumni	Score on Award	Score on HiCi	Score on N&S	Score on PUB	Score on PCP
301-400	301-400	RMIT University	AU	14-20	0.0	0.0	16.1	6.8	36.0	21.5
301-400	301-400	ShanghaiTech University	CN	55-82	0.0	0.0	6.6	23.0	29.2	27.3
301-400	401-500	South China Agricultural University	CN	55-82	0.0	0.0	14.7	6.0	38.9	13.5
301-400	401-500	Southwest Jiaotong University	CN	55-82	0.0	0.0	6.6	5.5	49.8	15.9
301-400	301-400	Stony Brook University	US	79-96	0.0	0.0	14.7	15.2	33.6	15.7
301-400	401-500	The University of Georgia	US	79-96	0.0	0.0	9.3	13.6	40.7	17.5
301-400	201-300	Ulsan Natl Inst Sci Tech	KR	7-9	0.0	0.0	17.4	18.2	22.8	31.0
301-400	301-400	University College Cork	IE	2-3	0.0	0.0	23.7	10.3	26.4	15.6
301-400	301-400	University College Dublin	IE	2-3	0.0	0.0	13.2	12.5	37.9	17.7
301-400	401-500	University of Alabama at Birmingham	US	79-96	0.0	0.0	6.6	11.6	40.0	13.6
301-400	301-400	University of Antwerp	BE	5-6	0.0	0.0	13.2	12.1	35.2	28.6
301-400	301-400	University of Cincinnati	US	79-96	0.0	0.0	6.6	14.5	39.2	14.8
301-400	301-400	University of Duisburg-Essen	DE	22-27	0.0	0.0	17.4	11.3	31.2	27.2
301-400	401-500	University of Dundee	GB	27-32	0.0	0.0	17.4	13.3	22.3	23.6
301-400	201-300	University of East Anglia	GB	27-32	21.6	0.0	11.4	13.9	25.7	23.8
301-400	301-400	University of Florence	IT	8-12	0.0	0.0	9.3	12.8	40.9	20.3
301-400	301-400	University of Genoa	IT	8-12	0.0	0.0	14.7	5.6	35.7	20.6
301-400	301-400	University of Granada	ES	3-8	0.0	0.0	11.4	7.9	40.4	14.9
301-400	301-400	University of Hawaii at Manoa	US	79-96	0.0	0.0	13.2	15.4	32.1	20.1
301-400	301-400	University of Iowa	US	79-96	0.0	0.0	9.3	13.7	39.2	14.5
301-400	301-400	University of Kansas	US	79-96	16.1	0.0	6.6	10.1	36.9	13.3
301-400	301-400	University of Kentucky	US	79-96	8.8	0.0	9.3	8.4	36.4	16.7
301-400	301-400	University of Leicester	GB	27-32	0.0	0.0	9.3	13.0	31.7	21.5
301-400	301-400	University of Macau	MO	1	0.0	0.0	13.2	3.6	41.7	27.9
301-400	201-300	University of Manitoba	CA	11-15	10.2	0.0	18.6	7.2	34.4	19.4
301-400	301-400	University of Marburg	DE	22-27	7.2	0.0	9.3	13.3	26.2	28.0
301-400	301-400	University of Miami	US	79-96	0.0	0.0	6.6	15.1	40.8	20.7
301-400	301-400	University of Milano-Bicocca	IT	8-12	0.0	0.0	9.3	9.5	36.2	22.3
301-400	301-400	University of Nebraska, Lincoln	US	79-96	14.4	0.0	11.4	11.6	29.4	16.7
301-400	301-400	University of Notre Dame	US	79-96	11.4	0.0	9.3	14.8	29.3	18.8
301-400	301-400	University of Potsdam	DE	22-27	0.0	0.0	9.3	15.4	29.1	32.2
301-400	301-400	Shanghai Univ Sci Technol	CN	55-82	0.0	0.0	16.1	5.6	39.2	16.5
301-400	301-400	University of Southern Denmark	DK	4-5	0.0	0.0	11.4	11.9	40.3	18.3
301-400	301-400	University of St Andrews	GB	27-32	8.8	0.0	9.3	18.4	24.8	21.3
301-400	301-400	University of Stuttgart	DE	22-27	16.9	0.0	9.3	10.7	25.8	29.2
301-400	301-400	University of Tasmania	AU	14-20	0.0	0.0	11.4	15.8	29.1	23.4
301-400	301-400	University of the Basque Country	ES	3-8	0.0	0.0	6.6	13.6	36.5	19.6
301-400	301-400	University of Trento	IT	8-12	0.0	0.0	14.7	9.1	30.1	22.8
301-400	301-400	University of Ulm	DE	22-27	0.0	0.0	16.1	8.0	27.3	30.8
301-400	301-400	University of Victoria	CA	11-15	0.0	0.0	17.4	12.6	29.1	19.6
301-400	301-400	University of Wollongong	AU	14-20	0.0	0.0	9.3	12.1	32.6	24.2
301-400	201-300	Virginia Commonwealth University	US	79-96	8.8	12.8	9.3	5.1	31.9	13.1
301-400	301-400	Vrije Universiteit Brussel	BE	5-6	16.9	0.0	9.3	10.3	32.2	28.8
301-400	301-400	Western Sydney University	AU	14-20	0.0	0.0	18.6	10.4	30.7	22.8
301-400	201-300	Western University	CA	11-15	0.0	0.0	14.7	6.3	42.4	20.0
301-400	501-600	Westlake University	CN	55-82	0.0	0.0	14.7	22.4	24.6	15.3
301-400	401-500	Xidian University	CN	55-82	0.0	0.0	11.4	1.5	44.8	14.8
301-400	301-400	Yangzhou University	CN	55-82	0.0	0.0	9.3	5.1	48.2	15.0
301-400	401-500	Yunnan University	CN	55-82	0.0	0.0	6.6	13.7	40.1	14.9
301-400	301-400	Zhejiang University of Technology	CN	55-82	0.0	0.0	14.7	7.4	43.7	15.3

* Institutions within the same rank range are listed alphabetically.

WORLD TOP 500 UNIVERSITIES

World Rank 2025	World Rank 2024	Institution*	Country / Region	National/Regional Rank	Score on Alumni	Score on Award	Score on HiCi	Score on N&S	Score on PUB	Score on PCP
401-500	401-500	Aalto University	FI	2-4	0.0	0.0	9.3	12.7	31.0	14.6
401-500	501-600	Anhui Medical University	CN	83-101	0.0	0.0	6.6	6.0	41.1	19.2
401-500	301-400	Cairo University	EG	1	16.9	0.0	0.0	3.9	41.3	18.2
401-500	401-500	Univ Cattolica – Sacro Cuore	IT	13-18	0.0	0.0	11.4	1.5	34.6	21.4
401-500	401-500	China Medical University (Taichung)	TW	2-5	0.0	0.0	6.6	4.1	34.1	25.4
401-500	301-400	China Univ Geosciences Beijing	CN	83-101	0.0	0.0	11.4	5.1	36.9	19.0
401-500	401-500	China Univ Min Technol	CN	83-101	0.0	0.0	6.6	1.5	45.3	16.8
401-500	401-500	City Univ New York – Graduate Center	US	97-111	0.0	0.0	11.4	11.7	22.3	26.0
401-500	501-600	Donghua University	CN	83-101	0.0	0.0	9.3	4.6	35.8	16.7
401-500	401-500	Flinders University	AU	21-24	14.4	0.0	0.0	7.0	30.5	23.3
401-500	601-700	Fujian Agr Forestry Univ	CN	83-101	0.0	0.0	9.3	11.6	32.0	12.8
401-500	501-600	Georgetown University	US	97-111	0.0	0.0	6.6	8.0	31.9	18.9
401-500	401-500	Guangzhou University	CN	83-101	0.0	0.0	6.6	4.9	39.4	14.1
401-500	501-600	Guizhou University	CN	83-101	0.0	0.0	0.0	3.9	46.2	14.5
401-500	401-500	Hainan University	CN	83-101	0.0	0.0	6.6	3.9	42.4	13.6
401-500	401-500	Hannover Medical School	DE	28-35	0.0	0.0	6.6	8.4	27.6	27.9
401-500	401-500	Hefei University of Technology	CN	83-101	0.0	0.0	9.3	2.1	43.4	14.7
401-500	501-600	Hiroshima University	JP	11-13	0.0	0.0	6.6	9.6	34.9	14.6
401-500	401-500	Hohai University	CN	83-101	0.0	0.0	0.0	1.5	46.5	16.1
401-500	301-400	Indiana University, Indianapolis	US	97-111	0.0	0.0	9.3	9.2	38.2	12.4
401-500	501-600	Iowa State University	US	97-111	0.0	0.0	6.6	9.0	33.9	15.4
401-500	301-400	James Cook University	AU	21-24	0.0	0.0	13.2	14.1	24.3	25.0
401-500	401-500	King Khalid University	SA	4	0.0	0.0	0.0	1.5	46.3	19.5
401-500	401-500	Kyungpook National University	KR	10-12	0.0	0.0	6.6	6.0	36.1	16.2
401-500	401-500	Leibniz University Hannover	DE	28-35	0.0	0.0	9.3	8.5	27.2	26.8
401-500	401-500	Louisiana State Univ – Baton Rouge	US	97-111	0.0	0.0	9.3	9.1	30.5	16.9
401-500	401-500	Macau Univ Sci & Tech	MO	2	0.0	0.0	11.4	3.9	32.2	23.7
401-500	401-500	Masaryk University	CZ	2	0.0	0.0	6.6	11.3	29.8	22.0
401-500	501-600	Medical University of Graz	AT	5-6	0.0	6.4	13.2	4.9	22.8	25.9
401-500	501-600	Medical University of Innsbruck	AT	5-6	0.0	0.0	14.7	6.5	21.8	25.5
401-500	401-500	Nanjing Normal University	CN	83-101	0.0	0.0	11.4	6.0	38.3	14.0
401-500	501-600	Nanjing University of Chinese Medicine	CN	83-101	0.0	0.0	6.6	6.9	34.8	16.1
401-500	401-500	National Cheng Kung University	TW	2-5	0.0	0.0	9.3	7.2	36.4	19.3
401-500	401-500	National Tsing Hua University	TW	2-5	11.4	0.0	6.6	7.5	29.9	18.5
401-500	401-500	Natl Univ Def Technol	CN	83-101	0.0	0.0	9.3	4.6	39.6	17.2
401-500	401-500	National Yang Ming Chiao Tung Univ	TW	2-5	0.0	0.0	6.6	7.2	40.1	20.2
401-500	401-500	Ningbo University	CN	83-101	0.0	0.0	0.0	3.3	48.6	18.2
401-500	301-400	Northwest University	CN	83-101	0.0	0.0	0.0	12.1	37.2	14.4
401-500	401-500	Okinawa Inst Sci & Technol Grad Univ	JP	11-13	0.0	20.2	6.6	12.9	14.0	12.0
401-500	501-600	Osaka Metropolitan University	JP	11-13	14.4	0.0	9.3	7.8	26.5	13.0
401-500	401-500	Polytechnic University of Valencia	ES	9-10	0.0	0.0	13.2	9.3	31.0	14.9
401-500	401-500	Pusan National University	KR	10-12	0.0	0.0	6.6	8.4	36.4	16.3
401-500	401-500	Saarland University	DE	28-35	0.0	0.0	11.4	8.7	25.3	27.0
401-500	401-500	Sao Paulo State University	BR	2-3	0.0	0.0	6.6	5.3	42.9	18.4
401-500	501-600	Sejong University	KR	10-12	0.0	0.0	13.2	4.4	30.3	22.6
401-500	301-400	Simon Fraser University	CA	16-17	0.0	0.0	6.6	15.1	30.6	17.1
401-500	501-600	South China Normal University	CN	83-101	0.0	0.0	6.6	6.4	37.6	12.7
401-500	501-600	Southwest University	CN	83-101	0.0	0.0	6.6	2.5	45.5	13.1
401-500	401-500	St Petersburg University	RU	2	25.5	0.0	0.0	7.9	30.2	15.2
401-500	401-500	Stellenbosch University	ZA	3	0.0	0.0	6.6	12.3	32.9	15.1

* Institutions within the same rank range are listed alphabetically.

WORLD TOP 500 UNIVERSITIES

World Rank 2025	World Rank 2024	Institution*	Country / Region	National/Regional Rank	Score on Alumni	Score on Award	Score on HiCi	Score on N&S	Score on PUB	Score on PCP
401-500	301-400	Swedish Univ Agr Sci	SE	9-10	0.0	0.0	9.3	9.6	27.9	26.9
401-500	401-500	Technical University Darmstadt	DE	28-35	12.5	0.0	6.6	10.9	26.8	27.6
401-500	401-500	Tehran University of Medical Sciences	IR	1-2	0.0	0.0	9.3	4.4	36.4	15.9
401-500	401-500	Temple University	US	97-111	0.0	0.0	14.7	9.8	30.1	12.4
401-500	501-600	Chinese Univ Hong Kong Shenzhen	CN	83-101	0.0	0.0	13.2	8.7	25.8	20.1
401-500	401-500	The University of Newcastle, Australia	AU	21-24	0.0	0.0	13.2	5.5	31.8	24.9
401-500	401-500	The University of Reading	GB	33-37	0.0	0.0	9.3	9.6	27.0	20.1
401-500	501-600	The University of Texas at Dallas	US	97-111	12.5	0.0	6.6	11.8	26.2	21.5
401-500	301-400	Toulouse Capitole University	FR	15-18	0.0	27.1	0.0		10.7	29.7
401-500	501-600	Umea University	SE	9-10	0.0	0.0	6.6	11.1	30.9	16.2
401-500	401-500	University of Aveiro	PT	3	0.0	0.0	13.2	3.7	29.2	22.4
401-500	401-500	University of Bari	IT	13-18	0.0	0.0	11.4	7.2	33.2	18.7
401-500	501-600	University of Bath	GB	33-37	0.0	0.0	6.6	9.9	31.1	19.8
401-500	401-500	University of Bayreuth	DE	28-35	0.0	0.0	6.6	15.4	21.4	25.6
401-500	401-500	University of Belgrade	RS	1	0.0	0.0	6.6	5.5	41.6	17.9
401-500	401-500	University of Campinas	BR	2-3	0.0	0.0	0.0	9.4	39.2	17.0
401-500	401-500	University of Canterbury	NZ	2-4	0.0	0.0	14.7	10.2	23.3	22.6
401-500	401-500	University of Central Florida	US	97-111	0.0	0.0	13.2	11.0	30.5	18.0
401-500	401-500	University of Côte d'Azur	FR	15-18	0.0	0.0	6.6	17.4	30.2	18.5
401-500	501-600	University of Essex	GB	33-37	17.7	0.0	11.4	5.3	24.0	17.4
401-500	301-400	University of Illinois Chicago	US	97-111	0.0	0.0	0.0	11.9	40.0	15.1
401-500	301-400	University of Jena	DE	28-35	0.0	0.0	6.6	12.8	29.1	26.2
401-500	401-500	University of Kent	GB	33-37	18.4	0.0	9.3	7.0	22.3	19.2
401-500	501-600	University of Konstanz	DE	28-35	0.0	0.0	6.6	18.6	21.7	27.6
401-500	301-400	University of Liege	BE	7	5.1	0.0	6.6	13.1	30.0	24.2
401-500	301-400	University of Lille	FR	15-18	0.0	0.0	6.6	10.8	38.2	14.0
401-500	301-400	University of Maryland, Baltimore	US	97-111	0.0	0.0	6.6	12.6	34.5	14.7
401-500	501-600	University of Oklahoma, Norman	US	97-111	0.0	0.0	14.7	8.5	28.2	16.2
401-500	401-500	University of Otago	NZ	2-4	0.0	0.0	6.6	12.4	30.9	19.8
401-500	401-500	University of Oulu	FI	2-4	10.2	0.0	6.6	7.6	31.3	14.2
401-500	401-500	University of Pavia	IT	13-18	0.0	0.0	9.3	6.8	33.2	22.0
401-500	301-400	University of Regensburg	DE	28-35	0.0	0.0	6.6	17.9	23.5	25.5
401-500	401-500	University of Rennes	FR	15-18	0.0	0.0	11.4	10.4	30.1	16.3
401-500	401-500	University of Rome Tor Vergata	IT	13-18	0.0	0.0	0.0	12.0	34.7	20.3
401-500	401-500	University of Saskatchewan	CA	16-17	7.2	0.0	6.6	7.9	29.7	16.9
401-500	401-500	University of Seville	ES	9-10	0.0	0.0	6.6	6.5	37.1	13.1
401-500	401-500	University of South Australia	AU	21-24	0.0	0.0	13.2	9.9	27.6	21.2
401-500	401-500	University of South Carolina, Columbia	US	97-111	0.0	0.0	6.6	8.5	34.0	15.3
401-500	301-400	University of South Florida	US	97-111	0.0	0.0	6.6	10.5	36.8	16.2
401-500	401-500	University of Surrey	GB	33-37	0.0	0.0	13.2	5.9	31.8	22.4
401-500	401-500	University of Szeged	HU	1	13.5	16.9	0.0	4.1	22.0	12.5
401-500	401-500	University of Tehran	IR	1-2	11.4	0.0	0.0	4.4	39.4	17.1
401-500	401-500	University of Turku	FI	2-4	0.0	0.0	6.6	12.8	35.2	16.0
401-500	401-500	University of Vermont	US	97-111	12.5	0.0	6.6	9.5	25.2	19.7
401-500	501-600	University of Verona	IT	13-18	0.0	0.0	13.2	3.9	28.2	21.3
401-500	401-500	University of Warsaw	PL	1	18.4	0.0	0.0	10.9	32.4	11.0
401-500	401-500	Victoria University of Wellington	NZ	2-4	10.2	0.0	11.4	7.2	24.3	19.6
401-500	401-500	Vita-Salute San Raffaele University	IT	13-18	0.0	0.0	14.7	6.9	23.4	26.9
401-500	401-500	Washington State University	US	97-111	0.0	0.0	14.7	11.6	28.5	15.1
401-500	501-600	Wenzhou Medical University	CN	83-101	0.0	0.0	0.0	6.9	45.0	17.4

* Institutions within the same rank range are listed alphabetically.

2025

**ACADEMIC RANKING OF
WORLD UNIVERSITIES**

501–1000



WORLD 501-1000 UNIVERSITIES

World Rank 2025	World Rank 2024	Institution*	Country / Region	National/Regional Rank	Score on Alumni	Score on Award	Score on HiCi	Score on N&S	Score on PUB	Score on PCP
501-600	601-700	Alexandria University	EG	2	11.4	0.0	0.0	4.0	32.4	14.2
501-600	501-600	Aristotle University of Thessaloniki	GR	1-2	0.0	0.0	6.6	4.6	34.4	14.9
501-600	501-600	Auburn University	US	112-135	0.0	0.0	6.6	9.8	30.4	15.4
501-600	601-700	Bangor University	GB	38	10.2	0.0	13.2	7.3	16.9	22.4
501-600	401-500	Bar-Ilan University	IL	6	0.0	0.0	9.3	8.0	28.6	18.6
501-600	501-600	Beijing Jiaotong University	CN	102-126	0.0	0.0	0.0	1.5	41.8	15.2
501-600	501-600	Boston College	US	112-135	0.0	0.0	6.6	16.5	23.8	17.1
501-600	501-600	Carleton University	CA	18-19	0.0	0.0	6.6	7.2	28.4	15.3
501-600	501-600	Central China Normal University	CN	102-126	0.0	0.0	11.4	3.6	32.5	13.1
501-600	501-600	Changzhou University	CN	102-126	0.0	0.0	6.6	3.3	32.6	13.2
501-600	601-700	China University of Petroleum, Beijing	CN	102-126	0.0	0.0	6.6	5.1	35.2	15.0
501-600	501-600	Chongqing Medical University	CN	102-126	0.0	0.0	0.0	3.9	42.6	14.0
501-600	401-500	Drexel University	US	112-135	0.0	0.0	11.4	6.2	27.2	19.8
501-600	501-600	Eotvos Lorand University	HU	2	10.2	0.0	0.0	9.9	28.4	13.0
501-600	501-600	Federal University of Minas Gerais	BR	4-5	0.0	0.0	0.0	8.9	36.1	15.7
501-600	501-600	Federal University of Rio de Janeiro	BR	4-5	0.0	0.0	0.0	8.5	37.7	16.3
501-600	601-700	Fujian Normal University	CN	102-126	0.0	0.0	9.3	3.3	30.5	11.2
501-600	501-600	Hangzhou Dianzi University	CN	102-126	0.0	0.0	9.3	1.5	34.3	14.5
501-600	801-900	Hangzhou Normal University	CN	102-126	0.0	0.0	6.6	3.9	32.0	12.2
501-600	501-600	Harbin Engineering University	CN	102-126	0.0	0.0	6.6	1.5	40.0	14.8
501-600	601-700	Hebei University	CN	102-126	0.0	0.0	11.4	2.5	31.9	11.6
501-600	501-600	Hebei University of Technology	CN	102-126	0.0	0.0	6.6	0.0	35.8	13.6
501-600	401-500	Indian Institute of Science	IN	1-2	0.0	0.0	6.6	9.3	30.6	13.8
501-600	401-500	Istanbul University	TR	1	16.9	0.0	0.0	5.7	31.5	14.4
501-600	401-500	Jagiellonian University	PL	2	8.8	0.0	0.0	8.3	36.7	10.8
501-600	901-1000	Jiangsu Univ Sci Technol	CN	102-126	0.0	0.0	6.6	4.6	32.3	12.0
501-600	201-300	King Abdulaziz University	SA	5	0.0	0.0	0.0	5.1	41.6	11.4
501-600	501-600	Kobe University	JP	14-15	13.5	0.0	0.0	10.8	29.8	13.6
501-600	601-700	Medical College of Wisconsin	US	112-135	0.0	0.0	6.6	9.1	28.1	11.7
501-600	501-600	Medical University of South Carolina	US	112-135	0.0	0.0	6.6	5.7	27.7	27.3
501-600	501-600	Murdoch University	AU	25	0.0	0.0	11.4	6.9	21.6	23.4
501-600	401-500	Nanjing Forestry University	CN	102-126	0.0	0.0	0.0	1.5	44.4	16.2
501-600	301-400	Univ Athens	GR	1-2	0.0	0.0	0.0	7.9	37.3	16.1
501-600	601-700	National Polytechnic Institute	MX	2	0.0	0.0	6.6	2.7	33.6	14.5
501-600	601-700	National Sun Yat-Sen University	TW	6	0.0	0.0	9.3	4.1	26.9	19.0
501-600	601-700	North China Electric Power University	CN	102-126	0.0	0.0	0.0	4.6	39.0	14.4
501-600	601-700	Northeast Agricultural University	CN	102-126	0.0	0.0	14.7	2.1	30.5	14.3
501-600	601-700	Northeast Normal University	CN	102-126	0.0	0.0	6.6	5.3	30.7	12.5
501-600	501-600	Northern Arizona University	US	112-135	0.0	0.0	16.1	12.4	19.0	14.0
501-600	501-600	Okayama University	JP	14-15	0.0	0.0	9.3	7.7	26.5	12.5
501-600	601-700	Pontificia Univ Catolica	CL	1-2	0.0	0.0	6.6	8.7	32.5	14.4
501-600	501-600	Qatar University	QA	1	0.0	0.0	11.4	3.3	27.9	12.8
501-600	501-600	Saint Louis University (USA)	US	112-135	0.0	9.0	9.3	4.0	20.9	14.8
501-600	501-600	San Diego State University	US	112-135	0.0	0.0	9.3	6.5	25.0	16.0
501-600	501-600	Shaanxi Normal University	CN	102-126	0.0	0.0	9.3	3.9	33.1	12.4
501-600	601-700	Shandong Agricultural University	CN	102-126	0.0	0.0	14.7	6.9	24.9	11.9
501-600	501-600	Shandong Univ Sci Technol	CN	102-126	0.0	0.0	6.6	2.1	37.3	13.2
501-600	601-700	Shanxi University	CN	102-126	0.0	0.0	6.6	9.4	32.0	11.7
501-600	501-600	Tampere University	FI	5	0.0	0.0	6.6	7.2	32.3	14.2
501-600	401-500	Texas Tech University	US	112-135	0.0	0.0	6.6	8.3	32.5	15.7

* Institutions within the same rank range are listed alphabetically.

WORLD 501–1000 UNIVERSITIES

World Rank 2025	World Rank 2024	Institution*	Country / Region	National/Regional Rank	Score on Alumni	Score on Award	Score on HiCi	Score on N&S	Score on PUB	Score on PCP
501–600	501–600	The City College of New York	US	112–135	26.5	0.0	9.3	6.9	12.4	18.6
501–600	501–600	Univ New Mexico – Albuquerque	US	112–135	0.0	0.0	0.0	13.5	30.7	13.4
501–600	401–500	UT Health Sci Center – San Antonio	US	112–135	0.0	0.0	11.4	11.7	23.5	16.4
501–600	401–500	Univ Texas Med Branch – Galveston	US	112–135	0.0	0.0	9.3	14.2	21.7	17.3
501–600	501–600	Tianjin Medical University	CN	102–126	0.0	0.0	0.0	5.3	36.8	23.4
501–600	501–600	Tulane University	US	112–135	0.0	0.0	6.6	10.1	27.2	13.9
501–600	501–600	UiT The Arctic University of Norway	NO	4	0.0	0.0	6.6	9.1	26.2	15.2
501–600	401–500	State Univ New York – Buffalo	US	112–135	0.0	0.0	0.0	11.4	34.9	14.3
501–600	501–600	University of Arkansas at Fayetteville	US	112–135	0.0	0.0	9.3	10.2	26.3	14.8
501–600	501–600	University of Bremen	DE	36–40	0.0	0.0	0.0	15.3	26.1	28.0
501–600	501–600	University of California, Merced	US	112–135	0.0	0.0	11.4	11.1	17.6	22.3
501–600	801–900	Univ Naples 2	IT	19–22	0.0	0.0	9.3	2.9	27.5	18.2
501–600	401–500	University of Catania	IT	19–22	0.0	0.0	13.2	3.9	29.8	17.7
501–600	401–500	University of Chile	CL	1–2	5.1	0.0	0.0	8.6	32.5	14.2
501–600	501–600	University of Coimbra	PT	4–5	0.0	0.0	0.0	10.3	34.3	18.5
501–600	501–600	University of Fribourg	CH	8	0.0	0.0	11.4	9.3	20.9	18.8
501–600	601–700	University of Galway	IE	4	0.0	0.0	11.4	7.9	25.2	12.1
501–600	501–600	University of Giessen	DE	36–40	0.0	0.0	6.6	6.2	26.8	24.2
501–600	501–600	University of Guelph	CA	18–19	0.0	0.0	6.6	5.2	29.0	17.2
501–600	401–500	University of Halle–Wittenberg	DE	36–40	0.0	0.0	0.0	13.7	24.4	24.3
501–600	401–500	University of Johannesburg	ZA	4–5	0.0	0.0	0.0	8.1	35.3	15.3
501–600	501–600	University of Ljubljana	SI	1	0.0	0.0	0.0	7.2	36.0	16.4
501–600	601–700	University of Luebeck	DE	36–40	0.0	0.0	11.4	8.7	18.0	21.7
501–600	501–600	University of Maine	US	112–135	0.0	15.6	0.0	9.0	17.4	19.6
501–600	501–600	University of Minho	PT	4–5	0.0	0.0	9.3	3.9	28.8	16.9
501–600	501–600	University of Nantes	FR	19	0.0	0.0	6.6	8.8	28.8	14.1
501–600	501–600	University of Navarra	ES	11–14	0.0	0.0	14.7	5.4	24.2	20.7
501–600	601–700	University of Nevada, Las Vegas	US	112–135	0.0	0.0	9.3	10.3	23.8	16.4
501–600	601–700	University of Nevada, Reno	US	112–135	0.0	0.0	6.6	10.3	23.1	17.2
501–600	401–500	University of Oregon	US	112–135	5.1	0.0	0.0	13.0	25.6	16.7
501–600	501–600	University of Parma	IT	19–22	0.0	0.0	9.3	5.1	27.2	18.1
501–600	501–600	University of Perugia	IT	19–22	0.0	0.0	9.3	6.4	28.1	18.9
501–600	501–600	University of Pretoria	ZA	4–5	0.0	0.0	6.6	7.7	30.7	13.6
501–600	501–600	University of Rostock	DE	36–40	0.0	0.0	6.6	14.6	21.1	25.0
501–600	501–600	University of Salamanca	ES	11–14	0.0	0.0	6.6	7.7	27.0	15.9
501–600	501–600	University of Santiago Compostela	ES	11–14	0.0	0.0	6.6	9.4	30.5	16.2
501–600	601–700	University of Tartu	EE	1	0.0	0.0	9.3	11.0	26.0	12.5
501–600	401–500	University of Twente	NL	12	0.0	0.0	6.6	6.5	30.7	16.7
501–600	401–500	University of Ulsan	KR	13–14	0.0	0.0	6.6	4.9	32.0	16.3
501–600	501–600	University of Zaragoza	ES	11–14	0.0	0.0	6.6	6.5	31.8	14.5
501–600	401–500	Utah State University	US	112–135	12.5	0.0	6.6	10.9	24.0	15.6
501–600	501–600	Vellore Institute of Technology	IN	1–2	0.0	0.0	0.0	0.0	40.8	17.2
501–600	501–600	Vilnius University	LT	1	7.2	0.0	6.6	11.3	24.9	12.1
501–600	501–600	Wake Forest University	US	112–135	0.0	0.0	9.3	7.2	29.8	10.4
501–600	601–700	Wenzhou University	CN	102–126	0.0	0.0	11.4	1.5	30.7	13.8
501–600	501–600	West Virginia University	US	112–135	0.0	0.0	6.6	9.5	28.8	14.1
501–600	501–600	Xi'an University of Technology	CN	102–126	0.0	0.0	6.6	0.0	38.4	15.5
501–600	601–700	Yanshan University	CN	102–126	0.0	0.0	0.0	10.9	34.7	13.7
501–600	501–600	Yeungnam University	KR	13–14	0.0	0.0	9.3	0.0	32.4	18.2
501–600	501–600	Zhejiang Sci-Tech University	CN	102–126	0.0	0.0	6.6	4.9	34.4	12.7

* Institutions within the same rank range are listed alphabetically.

WORLD 501-1000 UNIVERSITIES

World Rank 2025	World Rank 2024	Institution*	Country / Region	National/Regional Rank	Score on Alumni	Score on Award	Score on HiCi	Score on N&S	Score on PUB	Score on PCP
601-700	601-700	Addis Ababa University	ET	1	16.1	0.0	0.0	5.7	24.9	11.8
601-700	601-700	Ain Shams University	EG	3-4	0.0	0.0	0.0	5.2	32.1	13.7
601-700	601-700	Air Force Medical University	CN	127-150	0.0	0.0	0.0	8.2	30.6	13.3
601-700	601-700	Australian Catholic University	AU	26-27	0.0	0.0	11.4	2.5	20.5	19.4
601-700	501-600	Baylor University	US	136-152	0.0	0.0	6.6	5.5	25.4	14.4
601-700	701-800	Beijing Forestry University	CN	127-150	0.0	0.0	0.0	4.1	33.9	15.3
601-700	701-800	Beijing Technol Business Univ	CN	127-150	0.0	0.0	6.6	2.1	28.5	14.5
601-700	501-600	Binghamton University	US	136-152	0.0	15.6	0.0	6.0	18.3	15.7
601-700	601-700	Brescia University	IT	23-29	0.0	0.0	6.6	4.9	25.5	20.5
601-700	701-800	Brunel University London	GB	39-41	0.0	0.0	9.3	2.9	24.5	16.4
601-700	601-700	Chang Gung University	TW	7	0.0	0.0	0.0	2.9	31.3	21.3
601-700	701-800	Chang'an University	CN	127-150	0.0	0.0	0.0	1.5	37.7	12.8
601-700	701-800	Chengdu University of Technology	CN	127-150	0.0	0.0	0.0	5.7	34.6	12.5
601-700	601-700	Chiba University	JP	16	0.0	0.0	0.0	10.2	27.8	13.4
601-700	701-800	China Medical University (Shenyang)	CN	127-150	0.0	0.0	0.0	1.5	33.9	18.8
601-700	601-700	China Univ Min Technol-Beijing	CN	127-150	0.0	0.0	6.6	0.0	31.7	18.7
601-700	501-600	Chonnam National University	KR	15-17	0.0	0.0	0.0	5.9	34.0	15.7
601-700	601-700	Chulalongkorn University	TH	1-2	0.0	0.0	0.0	2.9	35.6	15.0
601-700	701-800	Clemson University	US	136-152	0.0	0.0	0.0	7.2	29.2	15.7
601-700	601-700	Colorado School of Mines	US	136-152	0.0	0.0	9.3	8.1	19.4	21.7
601-700	601-700	Concordia University	CA	20-21	0.0	0.0	6.6	5.3	27.0	13.9
601-700	601-700	Dalian Maritime University	CN	127-150	0.0	0.0	6.6	2.1	32.6	13.4
601-700	601-700	Ewha Womans University	KR	15-17	0.0	0.0	6.6	5.9	28.1	15.4
601-700	401-500	Univ Fed Rio Grande Sul	BR	6-7	0.0	0.0	0.0	5.5	35.3	15.0
601-700	701-800	Federal University of Santa Catarina	BR	6-7	0.0	0.0	0.0	6.9	30.6	13.2
601-700	501-600	Florida International University	US	136-152	0.0	0.0	0.0	9.8	29.2	16.5
601-700	501-600	Georgia State University	US	136-152	0.0	0.0	6.6	4.6	27.7	16.0
601-700	801-900	Graz University of Technology	AT	7-9	0.0	0.0	9.3	5.5	20.9	22.1
601-700	701-800	Henan Univ of Science and Technology	CN	127-150	0.0	0.0	6.6	2.7	31.7	9.7
601-700	701-800	Homi Bhabha National Institute	IN	3-7	0.0	0.0	0.0	6.8	30.5	13.1
601-700	601-700	Hong Kong Baptist University	HK	6	0.0	0.0	6.6	7.1	26.8	15.8
601-700	601-700	Hunan Normal University	CN	127-150	0.0	0.0	6.6	2.5	33.3	12.0
601-700	601-700	Indian Institute of Technology Delhi	IN	3-7	0.0	0.0	0.0	7.5	32.6	14.1
601-700	901-1000	Indian Institute of Technology Kanpur	IN	3-7	0.0	0.0	6.6	6.6	26.4	11.8
601-700	601-700	INHA University	KR	15-17	0.0	0.0	6.6	3.9	27.4	15.6
601-700	501-600	Kansas State University	US	136-152	0.0	0.0	6.6	5.9	25.3	17.3
601-700	601-700	Khalifa University	AE	1	0.0	0.0	11.4	2.5	27.1	12.4
601-700	701-800	Lanzhou University of Technology	CN	127-150	0.0	0.0	6.6	0.0	31.3	13.0
601-700	501-600	Lebanese American University	LB	1	0.0	0.0	0.0	0.0	37.6	15.8
601-700	601-700	Liverpool John Moores University	GB	39-41	0.0	0.0	6.6	8.4	24.8	13.1
601-700	601-700	Mahidol University	TH	1-2	0.0	0.0	0.0	6.2	34.7	14.8
601-700	601-700	Manchester Metropolitan University	GB	39-41	0.0	0.0	9.3	5.3	23.3	13.6
601-700	601-700	Mansoura University	EG	3-4	0.0	0.0	0.0	2.9	33.9	14.3
601-700	601-700	Marche Polytechnic University	IT	23-29	0.0	0.0	11.4	3.1	21.6	19.3
601-700	501-600	Mississippi State University	US	136-152	0.0	0.0	6.6	8.0	24.4	15.2
601-700	501-600	Moscow Inst Phys & Technol	RU	3	19.7	0.0	0.0	6.9	23.6	11.9
601-700	601-700	Nantong University	CN	127-150	0.0	0.0	0.0	3.9	37.0	12.9
601-700	601-700	Naval Medical University	CN	127-150	0.0	0.0	6.6	5.5	29.2	12.8
601-700	801-900	Northeast Forestry University	CN	127-150	0.0	0.0	6.6	2.1	32.2	14.1
601-700	601-700	Polytechnic University of Madrid	ES	15-19	0.0	0.0	0.0	7.3	30.4	14.4

* Institutions within the same rank range are listed alphabetically.

WORLD 501–1000 UNIVERSITIES

World Rank 2025	World Rank 2024	Institution*	Country / Region	National/Regional Rank	Score on Alumni	Score on Award	Score on HiCi	Score on N&S	Score on PUB	Score on PCP
601–700	601–700	Polytechnic University of Turin	IT	23–29	0.0	0.0	0.0	4.6	31.3	18.5
601–700	601–700	Qilu University of Technology	CN	127–150	0.0	0.0	6.6	1.5	32.0	11.4
601–700	601–700	Qingdao Univ Sci Technol	CN	127–150	0.0	0.0	9.3	0.0	32.5	12.3
601–700	501–600	Rensselaer Polytechnic Institute	US	136–152	11.4	0.0	6.6	8.9	16.8	20.1
601–700	501–600	Rush University	US	136–152	0.0	0.0	11.4	4.1	24.9	14.4
601–700	801–900	Saveetha Inst Med & Tech Sci	IN	3–7	0.0	0.0	0.0	0.0	40.1	16.9
601–700	601–700	Semmelweis University	HU	3	0.0	0.0	9.3	6.7	24.4	11.4
601–700	601–700	Shandong First Medical University	CN	127–150	0.0	0.0	0.0	3.3	38.2	13.7
601–700	801–900	Shanghai Normal University	CN	127–150	0.0	0.0	6.6	7.5	25.7	10.2
601–700	701–800	Shanghai Ocean University	CN	127–150	0.0	0.0	6.6	2.1	27.8	16.6
601–700	801–900	Southwest Petroleum University	CN	127–150	0.0	0.0	6.6	2.5	32.2	12.1
601–700	401–500	Taif University	SA	6	0.0	0.0	6.6	1.5	32.6	14.0
601–700	601–700	Taiyuan University of Technology	CN	127–150	0.0	0.0	0.0	1.5	39.4	12.6
601–700	601–700	Technical University of Braunschweig	DE	41–44	11.4	0.0	0.0	6.3	20.9	21.9
601–700	701–800	Technical University of Dortmund	DE	41–44	0.0	0.0	0.0	8.1	24.4	23.2
601–700	601–700	Thomas Jefferson University	US	136–152	0.0	0.0	0.0	5.7	26.9	25.9
601–700	601–700	Università Della Svizzera Italiana	CH	9	0.0	0.0	6.6	14.2	16.0	21.0
601–700	601–700	University of Alicante	ES	15–19	0.0	0.0	6.6	7.7	24.6	14.4
601–700	701–800	University of Augsburg	DE	41–44	0.0	0.0	9.3	6.3	19.3	21.0
601–700	801–900	University of Burgundy Europe	FR	20	0.0	0.0	6.6	7.9	23.4	14.0
601–700	601–700	University of Delhi	IN	3–7	0.0	0.0	6.6	2.9	29.2	12.7
601–700	701–800	University of Eastern Finland	FI	6	0.0	0.0	0.0	8.7	29.6	13.0
601–700	701–800	University of Ferrara	IT	23–29	0.0	0.0	6.6	4.9	26.4	20.3
601–700	601–700	University of Graz	AT	7–9	12.5	0.0	0.0	10.4	20.9	21.0
601–700	601–700	University of Haifa	IL	7	0.0	0.0	0.0	9.5	28.9	20.2
601–700	601–700	University of Health Sciences Turkey	TR	2	0.0	0.0	0.0	1.5	36.0	15.2
601–700	601–700	University of Iceland	IS	1	0.0	0.0	6.6	12.5	21.8	10.9
601–700	501–600	University of KwaZulu–Natal	ZA	6	0.0	0.0	0.0	12.9	28.9	13.3
601–700	601–700	University of Louisville	US	136–152	0.0	0.0	9.3	5.7	25.9	13.6
601–700	601–700	University of Luxembourg	LU	1	0.0	0.0	11.4	7.2	23.4	11.4
601–700	401–500	University of Malaya	MY	1	0.0	0.0	0.0	4.4	35.9	15.2
601–700	501–600	University of Murcia	ES	15–19	0.0	0.0	6.6	3.6	26.9	13.9
601–700	601–700	Univ Nat Resources Life Sci	AT	7–9	0.0	0.0	9.3	3.9	22.0	22.8
601–700	601–700	University of New Hampshire	US	136–152	0.0	0.0	11.4	4.9	20.8	16.9
601–700	501–600	University of North Texas	US	136–152	0.0	0.0	6.6	6.0	27.4	16.7
601–700	701–800	University of Oldenburg	DE	41–44	0.0	0.0	6.6	10.3	20.3	22.3
601–700	801–900	University of Oviedo	ES	15–19	0.0	0.0	6.6	5.8	26.8	13.8
601–700	801–900	University of Salerno	IT	23–29	0.0	0.0	9.3	3.3	26.8	16.4
601–700	601–700	University of Siena	IT	23–29	0.0	0.0	6.6	6.9	25.4	19.0
601–700	601–700	University of Southern Queensland	AU	26–27	0.0	0.0	9.3	4.3	22.9	21.5
601–700	601–700	University of Toledo	US	136–152	0.0	0.0	9.3	9.3	18.9	18.2
601–700	601–700	University of Trieste	IT	23–29	0.0	0.0	0.0	10.1	27.2	21.4
601–700	701–800	University of Wyoming	US	136–152	0.0	0.0	6.6	9.2	21.1	16.6
601–700	401–500	University of Zagreb	HR	1	0.0	0.0	0.0	6.1	34.9	14.9
601–700	701–800	University Rovira i Virgili	ES	15–19	0.0	0.0	9.3	5.2	22.1	23.1
601–700	601–700	Wayne State University	US	136–152	0.0	0.0	0.0	6.5	30.8	13.5
601–700	701–800	Xinjiang University	CN	127–150	0.0	0.0	0.0	0.0	37.6	13.8
601–700	401–500	York University	CA	20–21	0.0	0.0	0.0	6.7	31.4	12.9
601–700	601–700	Zhejiang Chinese Medical University	CN	127–150	0.0	0.0	0.0	3.6	33.2	15.1
601–700	701–800	Zhejiang Normal University	CN	127–150	0.0	0.0	0.0	4.7	35.7	12.8

* Institutions within the same rank range are listed alphabetically.

WORLD 501-1000 UNIVERSITIES

World Rank 2025	World Rank 2024	Institution*	Country / Region	National/Regional Rank	Score on Alumni	Score on Award	Score on HiCi	Score on N&S	Score on PUB	Score on PCP
701-800	701-800	Al-Azhar University	EG	5	0.0	0.0	0.0	4.1	30.6	13.0
701-800	801-900	Anhui Agricultural University	CN	151-173	0.0	0.0	6.6	2.7	27.0	11.4
701-800	801-900	Ankara University	TR	3-6	0.0	0.0	0.0	4.6	29.6	12.6
701-800	701-800	Army Medical University	CN	151-173	0.0	0.0	0.0	5.7	29.0	12.4
701-800	501-600	Beijing Univ Posts & Tele	CN	151-173	0.0	0.0	0.0	0.0	35.4	14.1
701-800	601-700	Bielefeld University	DE	45-46	0.0	0.0	0.0	4.1	25.4	22.2
701-800	601-700	Brigham Young University	US	153-162	7.2	0.0	6.6	3.6	24.2	11.7
701-800	801-900	China Pharmaceutical University	CN	151-173	0.0	0.0	0.0	7.0	27.6	13.3
701-800	701-800	Chongqing Univ Posts Telecom	CN	151-173	0.0	0.0	9.3	0.0	27.4	11.3
701-800	701-800	Chung-Ang University	KR	18-24	0.0	0.0	0.0	3.4	31.8	15.3
701-800	701-800	Chungbuk National University	KR	18-24	0.0	0.0	6.6	2.1	25.8	15.6
701-800	701-800	Chungnam National University	KR	18-24	0.0	0.0	0.0	2.5	31.8	16.1
701-800	701-800	City St George's, University of London	GB	42-49	0.0	0.0	9.3	3.6	17.9	19.3
701-800	601-700	COMSATS University Islamabad	PK	1-2	0.0	0.0	0.0	2.5	32.5	13.7
701-800	701-800	Copenhagen Business School	DK	6	0.0	0.0	9.3		18.3	9.8
701-800	701-800	Federal University of Parana	BR	8-11	0.0	0.0	0.0	3.6	31.9	13.5
701-800	701-800	Federal University of Santa Maria	BR	8-11	0.0	0.0	6.6	4.9	24.3	10.8
701-800	701-800	Federal University of Sao Paulo	BR	8-11	0.0	0.0	0.0	4.5	29.4	12.5
701-800	801-900	Gachon University	KR	18-24	0.0	0.0	0.0	2.1	31.1	16.3
701-800		Guangxi Normal University	CN	151-173	0.0	0.0	6.6	4.4	27.0	10.7
701-800	701-800	Hacettepe University	TR	3-6	0.0	0.0	0.0	3.6	33.1	14.0
701-800	901-1000	Hallym University	KR	18-24	0.0	0.0	6.6	3.6	22.8	14.5
701-800	701-800	Harbin Medical University	CN	151-173	0.0	0.0	0.0	2.1	32.7	17.6
701-800	801-900	Hebei Medical University	CN	151-173	0.0	0.0	0.0	0.0	31.7	17.9
701-800	601-700	Henan Normal University	CN	151-173	0.0	0.0	0.0	4.7	30.5	10.3
701-800	801-900	Heriot-Watt University	GB	42-49	0.0	0.0	6.6	5.4	19.9	17.0
701-800	701-800	Hubei University	CN	151-173	0.0	0.0	6.6	4.1	25.9	10.9
701-800	601-700	Humanitas University	IT	30-33	0.0	0.0	6.6	6.2	19.7	20.4
701-800	801-900	Indian Institute of Technology Madras	IN	8-9	0.0	0.0	0.0	5.7	30.8	13.2
701-800	801-900	Istanbul University Cerrahpasa	TR	3-6	0.0	0.0	6.6	3.1	26.2	11.4
701-800	701-800	Jeonbuk National University	KR	18-24	0.0	0.0	0.0	3.6	30.1	15.2
701-800	801-900	Jiangxi Normal University	CN	151-173	0.0	0.0	9.3	3.6	25.3	10.1
701-800	801-900	Kangwon National University	KR	18-24	0.0	0.0	6.6	3.6	25.7	13.6
701-800	701-800	Kent State University	US	153-162	0.0	0.0	9.3	6.7	19.2	12.9
701-800	701-800	Kindai University	JP	17-20	0.0	0.0	9.3	5.1	21.2	10.0
701-800	701-800	King Fahd Univ Petroleum & Minerals	SA	7-8	0.0	0.0	0.0	0.0	30.7	20.0
701-800	701-800	Kitasato University	JP	17-20	0.0	13.5	0.0	2.9	19.1	9.9
701-800	701-800	Koc University	TR	3-6	0.0	0.0	6.6	6.0	23.9	10.7
701-800		Lulea University of Technology	SE	11-12	0.0	0.0	9.3	2.5	19.8	17.6
701-800	801-900	Memorial University of Newfoundland	CA	22-24	0.0	0.0	9.3	4.1	21.9	13.3
701-800	701-800	Natl Taiwan Univ Sci & Tech	TW	8	0.0	0.0	6.6	1.5	23.8	17.6
701-800	601-700	National University of Malaysia	MY	2-3	0.0	0.0	0.0	3.9	32.0	13.6
701-800	701-800	Northumbria University	GB	42-49	0.0	0.0	0.0	7.1	28.6	12.7
701-800	601-700	North-West University	ZA	7	10.2	0.0	0.0	4.6	25.5	11.3
701-800	701-800	Norwegian University of Life Sciences	NO	5	0.0	0.0	6.6	7.9	19.0	17.6
701-800	701-800	NOVA University Lisbon	PT	6	0.0	0.0	6.6	5.7	23.1	13.8
701-800	501-600	Oklahoma State University	US	153-162	0.0	0.0	0.0	6.9	27.2	13.5
701-800	601-700	Palacký University Olomouc	CZ	3	0.0	0.0	0.0	7.6	23.4	20.8
701-800	701-800	Paris-East Créteil University	FR	21-22	0.0	0.0	6.6	5.9	22.2	13.1
701-800	801-900	Polytechnic University of Catalonia	ES	20-25	0.0	0.0	0.0	4.4	27.5	17.1

* Institutions within the same rank range are listed alphabetically.

WORLD 501–1000 UNIVERSITIES

World Rank 2025	World Rank 2024	Institution*	Country / Region	National/Regional Rank	Score on Alumni	Score on Award	Score on HiCi	Score on N&S	Score on PUB	Score on PCP
701–800	601–700	Prince Sattam Bin Abdulaziz University	SA	7–8	0.0	0.0	0.0	0.0	36.1	15.2
701–800	801–900	Scuola Normale Superiore – Pisa	IT	30–33	15.3	0.0	0.0	7.5	16.6	20.0
701–800	701–800	Shantou University	CN	151–173	0.0	0.0	0.0	4.9	29.9	13.6
701–800	901–1000	Shanxi Medical University	CN	151–173	0.0	0.0	0.0	1.5	31.3	16.6
701–800	601–700	Shinshu University	JP	17–20	0.0	0.0	6.6	6.7	21.1	11.9
701–800	701–800	Southern Methodist University	US	153–162	10.2	0.0	6.6	5.6	17.8	16.5
701–800	701–800	Southwestern Univ Finance & Econ	CN	151–173	0.0	0.0	0.0		27.9	13.7
701–800	701–800	SRM Institute of Science & Technology	IN	8–9	0.0	0.0	0.0	0.0	35.7	15.0
701–800	701–800	Stockholm School of Economics	SE	11–12	0.0	14.3	0.0		11.1	19.3
701–800	801–900	SUNY Downstate Hlth Sci Univ	US	153–162	0.0	13.8	0.0	3.3	14.8	16.4
701–800	701–800	Suzhou Univ Sci Technol	CN	151–173	0.0	0.0	9.3	0.0	28.4	11.9
701–800	501–600	Swansea University	GB	42–49	0.0	0.0	0.0	7.5	26.2	18.8
701–800	601–700	Tarbiat Modares University	IR	3	0.0	0.0	6.6	2.5	28.1	12.2
701–800	601–700	The University of Alabama, Tuscaloosa	US	153–162	0.0	0.0	0.0	6.1	30.1	14.1
701–800	701–800	The University of Texas at Arlington	US	153–162	0.0	0.0	6.6	4.9	23.4	13.1
701–800	601–700	The University of Texas at San Antonio	US	153–162	0.0	0.0	6.6	5.3	23.7	13.2
701–800	801–900	The University of Waikato	NZ	5	0.0	0.0	6.6	5.5	18.9	18.2
701–800		Tiangong University	CN	151–173	0.0	0.0	6.6	0.0	27.9	11.7
701–800		Tianjin University of Technology	CN	151–173	0.0	0.0	9.3	3.6	25.0	11.2
701–800	701–800	Tilburg University	NL	13	0.0	0.0	0.0		25.6	16.1
701–800	801–900	United Arab Emirates University	AE	2	0.0	0.0	0.0	6.0	28.3	12.2
701–800	701–800	University at Albany	US	153–162	0.0	0.0	6.6	5.4	22.7	16.6
701–800	701–800	University of Alcalá	ES	20–25	0.0	0.0	0.0	8.2	25.3	16.9
701–800	701–800	University of Brasília	BR	8–11	0.0	0.0	0.0	6.5	29.4	12.7
701–800	701–800	University of Calabria	IT	30–33	0.0	0.0	6.6	3.9	22.9	16.1
701–800	901–1000	University of Cantabria	ES	20–25	0.0	0.0	6.6	5.3	20.0	16.7
701–800	601–700	University of Clermont Auvergne	FR	21–22	0.0	0.0	0.0	8.4	27.4	14.1
701–800	701–800	University of Extremadura	ES	20–25	0.0	0.0	9.3	4.0	21.9	14.1
701–800	701–800	University of Greenwich	GB	42–49	16.1	0.0	6.6	3.9	16.9	11.9
701–800		University of Jinan	CN	151–173	0.0	0.0	6.6	2.1	27.5	9.6
701–800	701–800	University of Jyväskylä	FI	7	0.0	0.0	0.0	9.3	27.2	12.1
701–800	501–600	University of La Laguna	ES	20–25	0.0	0.0	0.0	11.1	24.5	16.4
701–800	801–900	University of Limerick	IE	5	0.0	0.0	9.3	3.4	22.2	10.3
701–800		University of Mannheim	DE	45–46	0.0	0.0	6.6	3.9	20.1	20.2
701–800	601–700	Univ Maryland – Baltimore County	US	153–162	0.0	0.0	6.6	9.0	18.1	16.8
701–800	701–800	University of Palermo(Italy)	IT	30–33	0.0	0.0	0.0	4.1	30.8	15.4
701–800	701–800	University of Plymouth	GB	42–49	0.0	0.0	6.6	4.6	20.9	16.3
701–800	801–900	University of Quebec Montreal	CA	22–24	0.0	0.0	6.6	4.7	25.3	12.7
701–800	601–700	University of Science, Malaysia	MY	2–3	0.0	0.0	0.0	3.6	32.1	13.6
701–800	601–700	University of Sherbrooke	CA	22–24	0.0	0.0	0.0	8.3	26.0	12.3
701–800	801–900	University of South China	CN	151–173	0.0	0.0	0.0	2.1	32.8	13.1
701–800	801–900	University of Stirling	GB	42–49	0.0	0.0	9.3	7.3	17.7	17.5
701–800	501–600	University of Strathclyde	GB	42–49	0.0	0.0	0.0	6.9	27.7	17.3
701–800	601–700	University of the Balearic Islands	ES	20–25	0.0	0.0	6.6	4.5	21.6	17.8
701–800	701–800	University of the Punjab	PK	1–2	12.5	0.0	0.0	1.5	27.7	12.3
701–800	601–700	Waseda University	JP	17–20	0.0	0.0	0.0	7.4	28.8	12.5
701–800	901–1000	Wuhan Institute of Technology	CN	151–173	0.0	0.0	6.6	4.6	25.7	11.4
701–800	801–900	Wuhan Univ Sci & Technol	CN	151–173	0.0	0.0	0.0	3.3	32.1	11.5
701–800	801–900	Xiangtan University	CN	151–173	0.0	0.0	0.0	4.7	30.2	11.5
701–800	801–900	Xuzhou Medical University	CN	151–173	0.0	0.0	0.0	2.1	30.5	17.1

* Institutions within the same rank range are listed alphabetically.

WORLD 501-1000 UNIVERSITIES

World Rank 2025	World Rank 2024	Institution*	Country / Region	National/Regional Rank	Score on Alumni	Score on Award	Score on HiCi	Score on N&S	Score on PUB	Score on PCP
801-900	901-1000	AGH University of Krakow	PL	3	0.0	0.0	0.0	3.6	30.2	12.4
801-900		Anhui Normal University	CN	174-195	0.0	0.0	6.6	4.1	24.1	9.2
801-900	901-1000	Augusta University	US	163-174	0.0	0.0	11.4	1.5	19.3	12.3
801-900	801-900	Birkbeck, University of London	GB	50-58	0.0	0.0	6.6	7.3	15.6	16.0
801-900		Brock University	CA	25	0.0	0.0	6.6	3.7	19.1	13.7
801-900	801-900	Budapest Univ Tech	HU	4	16.1	0.0	0.0	2.1	21.3	10.2
801-900	801-900	Capital Normal University	CN	174-195	0.0	0.0	6.6	4.1	22.9	10.2
801-900		Central Univ of Finance & Economics	CN	174-195	0.0	0.0	0.0		23.1	13.2
801-900	901-1000	Changsha Univ Sci Technol	CN	174-195	0.0	0.0	0.0	2.3	30.1	10.4
801-900	801-900	Chengdu University	CN	174-195	0.0	0.0	0.0	2.1	31.2	12.3
801-900	601-700	Chiang Mai University	TH	3	0.0	0.0	0.0	4.1	28.3	12.0
801-900	801-900	Cranfield University	GB	50-58	0.0	0.0	6.6	2.9	18.7	17.2
801-900	801-900	Czech Technical University in Prague	CZ	4-5	5.1	0.0	0.0	5.2	23.1	13.9
801-900	801-900	Czech Univ Life Scis Prague	CZ	4-5	0.0	0.0	0.0	4.9	22.0	21.3
801-900		Dongguan University of Technology	CN	174-195	0.0	0.0	9.3	1.5	22.1	11.7
801-900	601-700	Edith Cowan University	AU	28-29	0.0	0.0	0.0	2.1	23.9	21.5
801-900	901-1000	Ege University	TR	7-8	0.0	0.0	0.0	3.3	27.4	11.6
801-900	801-900	Federal University of Sao Carlos	BR	12-13	0.0	0.0	0.0	5.9	27.5	11.8
801-900	801-900	Federal University of Vicosa	BR	12-13	0.0	0.0	6.6	3.6	23.9	10.5
801-900	901-1000	Guangxi Medical University	CN	174-195	0.0	0.0	0.0	2.1	29.9	10.0
801-900	901-1000	Guangzhou Univ Chinese Med	CN	174-195	0.0	0.0	0.0	2.1	31.0	12.4
801-900	801-900	Heilongjiang University	CN	174-195	0.0	0.0	11.4	1.5	21.7	9.6
801-900	701-800	HSE University	RU	4-6	0.0	0.0	0.0		25.5	12.2
801-900		Indian Institute of Technology Bombay	IN	10-13	0.0	0.0	0.0	2.5	29.1	12.3
801-900	801-900	Indian Inst Tech – Kharagpur	IN	10-13	0.0	0.0	0.0	0.0	31.2	13.1
801-900	701-800	Indian Institute of Technology Roorkee	IN	10-13	0.0	0.0	0.0	1.5	29.2	12.3
801-900	801-900	INSA Toulouse	FR	23-26	0.0	0.0	11.4	4.6	12.5	16.5
801-900	701-800	Istanbul Technical University	TR	7-8	0.0	0.0	0.0	3.7	28.4	12.1
801-900	801-900	Johannes Kepler University Linz	AT	10	0.0	0.0	0.0	5.6	20.8	20.3
801-900	801-900	Kanazawa University	JP	21-24	0.0	0.0	0.0	7.9	24.3	13.2
801-900	801-900	King Faisal University	SA	9-10	0.0	0.0	0.0	5.2	26.6	11.4
801-900	601-700	Konkuk University	KR	25-26	0.0	0.0	0.0	6.0	27.0	13.9
801-900	701-800	Loughborough University	GB	50-58	0.0	0.0	0.0	4.6	26.7	15.8
801-900	901-1000	Manipal Academy of Higher Education	IN	10-13	0.0	0.0	0.0	0.0	32.6	13.7
801-900	801-900	Massey University	NZ	6	0.0	0.0	0.0	5.3	23.8	15.2
801-900	801-900	Maynooth University	IE	6	11.4	0.0	6.6	3.6	16.5	8.4
801-900		Montana State University, Bozeman	US	163-174	0.0	0.0	0.0	12.9	17.8	16.2
801-900	801-900	Nagasaki University	JP	21-24	10.2	0.0	0.0	4.6	21.9	11.3
801-900	901-1000	National Central University	TW	9-11	0.0	0.0	0.0	4.4	24.0	16.0
801-900	801-900	National Chung Hsing University	TW	9-11	0.0	0.0	0.0	3.9	27.2	15.5
801-900	801-900	National University of Colombia	CO	1-2	0.0	0.0	0.0	6.9	26.0	11.3
801-900	701-800	New Jersey Institute of Technology	US	163-174	0.0	0.0	6.6	6.9	16.7	17.0
801-900		New York University Abu Dhabi	AE	3	0.0	0.0	6.6	10.4	18.2	9.3
801-900		N China Univ Water Res & Elect Power	CN	174-195	0.0	0.0	6.6	3.6	22.7	8.8
801-900	901-1000	North University of China	CN	174-195	0.0	0.0	0.0	1.5	30.1	10.7
801-900	801-900	Nottingham Trent University	GB	50-58	0.0	0.0	6.6	2.1	23.1	16.5
801-900	701-800	Ohio University	US	163-174	12.5	0.0	0.0	9.2	18.2	12.1
801-900	801-900	Old Dominion University	US	163-174	0.0	0.0	6.6	6.7	19.7	14.1
801-900	801-900	Politecnico di Bari	IT	34-37	0.0	0.0	6.6	5.3	17.2	18.0
801-900	701-800	Qassim University	SA	9-10	0.0	0.0	0.0	1.5	28.8	12.1

* Institutions within the same rank range are listed alphabetically.

WORLD 501–1000 UNIVERSITIES

World Rank 2025	World Rank 2024	Institution*	Country / Region	National/Regional Rank	Score on Alumni	Score on Award	Score on HiCi	Score on N&S	Score on PUB	Score on PCP
801–900	801–900	Qingdao Agricultural University	CN	174–195	0.0	0.0	6.6	2.9	23.2	9.2
801–900	801–900	Royal Holloway, University of London	GB	50–58	0.0	0.0	0.0	9.7	21.2	16.8
801–900	701–800	Shahid Beheshti Univ Med Sci	IR	4–5	0.0	0.0	0.0	4.1	29.5	12.5
801–900	801–900	Shandong Normal University	CN	174–195	0.0	0.0	0.0	2.1	30.4	11.2
801–900	901–1000	Shanghai Univ of Finance & Econ	CN	174–195	0.0	0.0	0.0		23.0	13.9
801–900	901–1000	Shanghai Univ Tradit Chinese Med	CN	174–195	0.0	0.0	0.0	1.5	29.4	17.7
801–900	701–800	Sharif University of Technology	IR	4–5	14.4	0.0	0.0	2.1	24.1	11.0
801–900		Shenyang Pharmaceutical University	CN	174–195	0.0	0.0	9.3	1.5	20.7	13.5
801–900	801–900	Sichuan Agricultural University	CN	174–195	0.0	0.0	0.0	2.5	31.6	10.6
801–900	801–900	Skolkovo Inst Sci Technol	RU	4–6	0.0	0.0	9.3	8.1	15.8	8.4
801–900	701–800	Syracuse University	US	163–174	0.0	0.0	0.0	9.5	24.1	12.2
801–900	701–800	Taipei Medical University	TW	9–11	0.0	0.0	0.0	3.3	27.5	17.2
801–900	801–900	The Catholic University of Korea	KR	25–26	0.0	0.0	0.0	2.5	29.9	13.7
801–900	801–900	The Education University of Hong Kong	HK	7	0.0	0.0	6.6	0.0	23.9	16.6
801–900	801–900	Graduate Univ for Advanced Studies	JP	21–24	0.0	0.0	0.0	13.0	19.3	9.8
801–900	801–900	The Royal Veterinary College	GB	50–58	0.0	0.0	6.6	9.4	12.9	16.2
801–900	801–900	The University of Texas at El Paso	US	163–174	0.0	0.0	6.6	6.9	16.7	14.5
801–900	601–700	Tokyo University of Science	JP	21–24	11.4	0.0	0.0	5.8	21.7	10.0
801–900	701–800	Ulster University	GB	50–58	0.0	0.0	6.6	5.7	18.4	12.5
801–900		University of Antioquia	CO	1–2	0.0	0.0	6.6	5.9	21.0	9.6
801–900	801–900	University of Cagliari	IT	34–37	0.0	0.0	0.0	4.4	25.6	16.2
801–900	801–900	University of Crete	GR	3	0.0	0.0	6.6	5.7	20.1	9.2
801–900	701–800	University of Cyprus	CY	1	0.0	0.0	6.6	3.3	19.1	17.7
801–900	901–1000	University of Hertfordshire	GB	50–58	0.0	0.0	6.6	7.0	18.6	10.6
801–900	701–800	University of Hull	GB	50–58	13.5	0.0	0.0	3.6	17.6	17.0
801–900	901–1000	University of Jaen	ES	26–29	0.0	0.0	6.6	2.1	20.9	14.7
801–900	801–900	University of Kassel	DE	47–48	0.0	0.0	6.6	4.1	17.9	17.1
801–900	701–800	University of Lleida	ES	26–29	0.0	0.0	9.3	3.9	17.4	18.9
801–900	701–800	University of Magdeburg	DE	47–48	0.0	0.0	0.0	5.9	21.8	21.3
801–900	701–800	University of Malaga	ES	26–29	0.0	0.0	0.0	5.3	27.4	13.1
801–900	801–900	University of Messina	IT	34–37	0.0	0.0	0.0	2.5	26.5	15.8
801–900	801–900	University of Missouri, Kansas City	US	163–174	0.0	0.0	6.6	3.1	19.6	14.4
801–900	801–900	University of Modena and Reggio Emilia	IT	34–37	0.0	0.0	0.0	2.5	28.0	17.5
801–900	901–1000	University of Nebraska Medical Center	US	163–174	0.0	0.0	0.0	4.4	24.0	16.9
801–900		Univ Oklahoma Health Sciences Center	US	163–174	0.0	0.0	6.6	3.4	20.8	15.0
801–900	901–1000	University of Poitiers	FR	23–26	10.2	0.0	0.0	7.2	18.5	11.3
801–900	801–900	University of Rhode Island	US	163–174	0.0	0.0	6.6	3.6	20.3	14.4
801–900	901–1000	University of South Africa	ZA	8	13.5	0.0	0.0	2.1	23.4	10.7
801–900	701–800	University of the Sunshine Coast	AU	28–29	0.0	0.0	0.0	6.4	20.0	19.8
801–900		Univ Versailles St–Quentin–en–Yvelines	FR	23–26	0.0	0.0	0.0	4.1	24.8	17.8
801–900	801–900	University of Vigo	ES	26–29	0.0	0.0	0.0	4.4	24.4	14.4
801–900	801–900	University of Wisconsin, Milwaukee	US	163–174	8.8	0.0	0.0	6.7	19.6	13.0
801–900	601–700	University Putra Malaysia	MY	4	0.0	0.0	0.0	3.9	28.1	11.9
801–900	801–900	University Savoie Mont Blanc	FR	23–26	0.0	0.0	0.0	6.0	21.3	18.4
801–900	601–700	Ural Federal University	RU	4–6	0.0	0.0	0.0	3.6	29.6	12.5
801–900	901–1000	Xi'an Jiaotong–Liverpool University	CN	174–195	0.0	0.0	6.6	0.0	24.4	12.3
801–900	801–900	Xi An Univ Architecture Technol	CN	174–195	0.0	0.0	0.0	0.0	32.4	12.1
801–900	901–1000	Yangtze University	CN	174–195	0.0	0.0	0.0	2.1	29.6	10.6
801–900	901–1000	Yantai University	CN	174–195	0.0	0.0	0.0	2.1	28.6	11.7
801–900	901–1000	Zhejiang A&F University	CN	174–195	0.0	0.0	0.0	3.4	28.4	11.9

* Institutions within the same rank range are listed alphabetically.

WORLD 501-1000 UNIVERSITIES

World Rank 2025	World Rank 2024	Institution*	Country / Region	National/Regional Rank	Score on Alumni	Score on Award	Score on HiCi	Score on N&S	Score on PUB	Score on PCP
901-1000	901-1000	Adam Mickiewicz University	PL	4-7	0.0	0.0	0.0	6.0	25.0	9.1
901-1000	901-1000	Ajou University	KR	27-30	0.0	0.0	0.0	2.1	25.4	15.2
901-1000		Al-Imam Mohammad Ibn Saud Islamic Univ	SA	11-13	0.0	0.0	0.0	2.5	25.7	10.9
901-1000	901-1000	Amherst College	US	175-183	23.9	0.0	0.0	5.2	8.8	18.6
901-1000		Anhui Univ Sci & Technol	CN	196-222	0.0	0.0	0.0	0.0	28.4	10.9
901-1000	901-1000	Ataturk University	TR	9-11	0.0	0.0	0.0	2.9	25.8	10.9
901-1000	801-900	Auckland University of Technology	NZ	7	0.0	0.0	6.6	2.1	19.6	14.0
901-1000	901-1000	Banaras Hindu University	IN	14-15	0.0	0.0	0.0	2.9	26.4	11.2
901-1000	901-1000	Carlos III University of Madrid	ES	30-36	0.0	0.0	0.0	4.4	22.4	14.2
901-1000		Chengdu Univ Traditional Chinese Med	CN	196-222	0.0	0.0	0.0	2.1	26.3	10.8
901-1000		China Jiliang University	CN	196-222	0.0	0.0	0.0	2.1	27.2	11.1
901-1000	901-1000	Comenius University in Bratislava	SK	1	0.0	0.0	0.0	5.5	25.1	10.8
901-1000	901-1000	Dalian Medical University	CN	196-222	0.0	0.0	0.0	1.5	26.4	16.3
901-1000	801-900	Dongguk University	KR	27-30	0.0	0.0	0.0	2.7	25.9	13.5
901-1000	901-1000	Federal University of Bahia	BR	14-18	0.0	0.0	0.0	4.6	24.1	10.3
901-1000	901-1000	Federal University of Ceara	BR	14-18	0.0	0.0	0.0	5.1	25.0	10.7
901-1000	901-1000	Federal University of Pelotas	BR	14-18	0.0	0.0	6.6	2.1	20.7	9.2
901-1000	901-1000	Federal University of Pernambuco	BR	14-18	0.0	0.0	0.0	2.1	27.4	11.6
901-1000	801-900	Free University of Bozen-Bolzano	IT	38-41	0.0	0.0	6.6	2.1	16.5	16.8
901-1000		Gansu Agricultural University	CN	196-222	0.0	0.0	6.6	0.0	23.3	11.3
901-1000		Gazi University	TR	9-11	0.0	0.0	0.0	0.0	28.8	12.1
901-1000	901-1000	Gyeongsang National University	KR	27-30	0.0	0.0	0.0	1.5	26.6	13.5
901-1000		Hainan Medical University	CN	196-222	0.0	0.0	0.0	5.5	22.8	13.7
901-1000		Hamburg University of Technology	DE	49-51	0.0	0.0	9.3	3.9	13.2	15.7
901-1000		Hangzhou City University	CN	196-222	0.0	0.0	6.6	2.1	20.1	11.8
901-1000		Hangzhou Medical College	CN	196-222	0.0	0.0	0.0	2.1	23.2	16.1
901-1000	901-1000	Hassan II University of Casablanca	MA	1	0.0	0.0	6.6	2.9	20.8	9.3
901-1000		Hebei Normal University	CN	196-222	0.0	0.0	6.6	3.3	20.2	8.5
901-1000	901-1000	Henan Agricultural University	CN	196-222	0.0	0.0	0.0	3.9	25.9	9.7
901-1000	901-1000	Henan Polytechnic University	CN	196-222	0.0	0.0	0.0	0.0	30.5	9.4
901-1000	901-1000	Huaqiao University	CN	196-222	0.0	0.0	0.0	3.3	26.4	10.4
901-1000		Hunan Agricultural University	CN	196-222	0.0	0.0	0.0	4.6	25.4	9.6
901-1000	701-800	Iran University of Medical Sciences	IR	6	0.0	0.0	0.0	3.6	26.6	11.3
901-1000	601-700	Jaume I University	ES	30-36	0.0	0.0	6.6	2.5	19.2	14.7
901-1000	901-1000	Jazan University	SA	11-13	0.0	0.0	0.0	2.9	25.6	10.9
901-1000		Jilin Agricultural University	CN	196-222	0.0	0.0	0.0	3.3	24.0	12.4
901-1000	901-1000	Juntendo University	JP	25-29	0.0	0.0	0.0	5.4	23.4	10.1
901-1000	901-1000	Kaohsiung Medical University	TW	12	0.0	0.0	0.0	1.5	25.1	18.2
901-1000	901-1000	Kumamoto University	JP	25-29	0.0	0.0	0.0	6.2	21.9	13.1
901-1000		Kunming Medical University	CN	196-222	0.0	0.0	0.0	2.9	26.8	10.8
901-1000	901-1000	Lehigh University	US	175-183	0.0	0.0	0.0	8.0	18.8	14.5
901-1000	801-900	Liaocheng University	CN	196-222	0.0	0.0	0.0	1.5	27.9	10.4
901-1000		Lingnan University	HK	8	0.0	0.0	9.3	0.0	16.8	18.1
901-1000	901-1000	Linnaeus University	SE	13-14	0.0	0.0	6.6	3.3	18.2	12.7
901-1000	901-1000	Loyola University Chicago	US	175-183	0.0	0.0	0.0	5.4	21.5	13.3
901-1000		Marmara University	TR	9-11	0.0	0.0	0.0	3.9	24.4	10.4
901-1000		Michigan Technological University	US	175-183	7.2	0.0	0.0	7.1	15.6	16.8
901-1000		Nanjing Univ of Finance & Economics	CN	196-222	0.0	0.0	0.0		21.6	11.1
901-1000	901-1000	Nicolaus Copernicus University	PL	4-7	0.0	0.0	0.0	6.0	22.6	9.7
901-1000		Ningxia University	CN	196-222	0.0	0.0	0.0	2.5	26.3	9.9

* Institutions within the same rank range are listed alphabetically.

WORLD 501–1000 UNIVERSITIES

World Rank 2025	World Rank 2024	Institution*	Country / Region	National/Regional Rank	Score on Alumni	Score on Award	Score on HiCi	Score on N&S	Score on PUB	Score on PCP
901–1000	901–1000	North Dakota State University	US	175–183	0.0	0.0	6.6	0.0	20.0	16.4
901–1000	801–900	Novosibirsk State University	RU	7	12.5	0.0	0.0	2.9	21.8	10.0
901–1000	701–800	Orebro University	SE	13–14	0.0	0.0	0.0	3.7	22.5	18.4
901–1000		Pukyong National University	KR	27–30	0.0	0.0	0.0	2.3	24.6	16.0
901–1000		RCSI Univ of Med & Hlth Sciences	IE	7	0.0	0.0	6.6	3.9	19.0	8.6
901–1000		Rio de Janeiro State University	BR	14–18	0.0	0.0	0.0	3.6	24.7	10.5
901–1000	901–1000	Roma Tre University	IT	38–41	0.0	0.0	0.0	5.7	22.6	14.0
901–1000	701–800	Rutgers University, Newark	US	175–183	0.0	0.0	0.0	8.8	18.9	14.4
901–1000	801–900	Shaanxi Univ Sci & Technol	CN	196–222	0.0	0.0	0.0	0.0	29.2	13.2
901–1000		Shandong University of Technology	CN	196–222	0.0	0.0	0.0	0.0	29.5	10.7
901–1000		Shihezi University	CN	196–222	0.0	0.0	0.0	0.0	28.5	11.0
901–1000		Southwest Medical University	CN	196–222	0.0	0.0	0.0	2.1	26.8	11.4
901–1000		Southwest Univ Sci & Technol	CN	196–222	0.0	0.0	0.0	1.5	28.0	10.4
901–1000		Taiyuan Univ Sci & Technol	CN	196–222	0.0	0.0	9.3	1.5	20.4	9.6
901–1000		The Islamia University of Bahawalpur	PK	3–4	0.0	0.0	6.6	0.0	23.7	10.4
901–1000	701–800	The Open University	GB	59–61	0.0	0.0	0.0	8.3	20.4	11.0
901–1000	901–1000	Tokushima University	JP	25–29	12.5	0.0	0.0	5.5	17.0	10.6
901–1000	901–1000	Tokyo Univ Agr & Tech	JP	25–29	0.0	0.0	0.0	7.2	18.3	16.0
901–1000	701–800	Umm Al-Qura University	SA	11–13	0.0	0.0	0.0	0.0	28.9	12.2
901–1000	801–900	University of Alaska Fairbanks	US	175–183	0.0	0.0	0.0	11.6	15.3	18.1
901–1000		Univ Arkansas for Medical Sciences	US	175–183	0.0	0.0	0.0	4.1	21.1	20.2
901–1000		University of Beira Interior	PT	7	0.0	0.0	6.6	3.3	15.9	15.5
901–1000	901–1000	University of Cadiz	ES	30–36	0.0	0.0	0.0	5.5	21.1	13.8
901–1000	901–1000	University of Calcutta	IN	14–15	16.9	0.0	0.0	2.5	18.2	9.2
901–1000	701–800	University of Castilla–La Mancha	ES	30–36	0.0	0.0	0.0	2.5	25.6	12.9
901–1000	901–1000	University of Central Lancashire	GB	59–61	0.0	0.0	9.3	5.1	14.9	8.9
901–1000		University of Chieti–Pescara	IT	38–41	0.0	0.0	6.6	2.3	19.6	14.4
901–1000	901–1000	University of Cordoba	ES	30–36	0.0	0.0	0.0	2.9	23.8	15.5
901–1000	701–800	University of Eastern Piedmont	IT	38–41	0.0	0.0	0.0	4.1	20.8	19.7
901–1000	901–1000	University of Ghana	GH	1	0.0	0.0	0.0	6.5	23.0	10.1
901–1000	801–900	University of Girona	ES	30–36	0.0	0.0	0.0	3.6	21.9	20.9
901–1000	901–1000	University of Hohenheim	DE	49–51	0.0	0.0	0.0	7.6	18.5	18.8
901–1000	701–800	Univ Int Business & Econ	CN	196–222	0.0	0.0	0.0		22.0	12.8
901–1000	901–1000	University of Lahore	PK	3–4	0.0	0.0	0.0	1.5	27.2	11.5
901–1000		Univ of Las Palmas de Gran Canaria	ES	30–36	0.0	0.0	6.6	2.5	18.4	13.2
901–1000	901–1000	University of New Brunswick	CA	26–28	0.0	0.0	6.6	3.3	18.7	13.6
901–1000	901–1000	University of Patras	GR	4	0.0	0.0	0.0	4.1	24.5	10.5
901–1000		University of Picardie Jules Verne	FR	27	0.0	0.0	9.3	4.6	15.9	11.4
901–1000	901–1000	University of Portsmouth	GB	59–61	0.0	0.0	0.0	5.7	23.3	13.1
901–1000	801–900	University of Regina	CA	26–28	0.0	0.0	6.6	5.5	16.4	13.8
901–1000	701–800	University of Sharjah	AE	4	0.0	0.0	0.0	2.9	26.9	11.4
901–1000	701–800	Univ Tennessee Health Sci Center	US	175–183	0.0	0.0	0.0	9.4	20.5	10.6
901–1000		University of Windsor	CA	26–28	0.0	0.0	6.6	3.1	17.8	13.6
901–1000	901–1000	University of Wuppertal	DE	49–51	0.0	0.0	0.0	7.5	18.7	19.0
901–1000	901–1000	Warsaw University of Technology	PL	4–7	0.0	0.0	0.0	3.6	25.3	11.0
901–1000		Wroclaw Univ Sci & Technol	PL	4–7	0.0	0.0	0.0	4.1	24.5	11.0
901–1000	701–800	Xi'an Univ Sci & Technol	CN	196–222	0.0	0.0	0.0	0.0	28.6	12.0
901–1000	901–1000	Yokohama City University	JP	25–29	0.0	0.0	0.0	8.8	21.9	9.9
901–1000	701–800	Zagazig University	EG	6	0.0	0.0	0.0	1.5	27.6	11.6
901–1000	801–900	Zhongnan Univ Econ & Law	CN	196–222	0.0	0.0	0.0		22.8	10.7

* Institutions within the same rank range are listed alphabetically.

Ranking Methodology

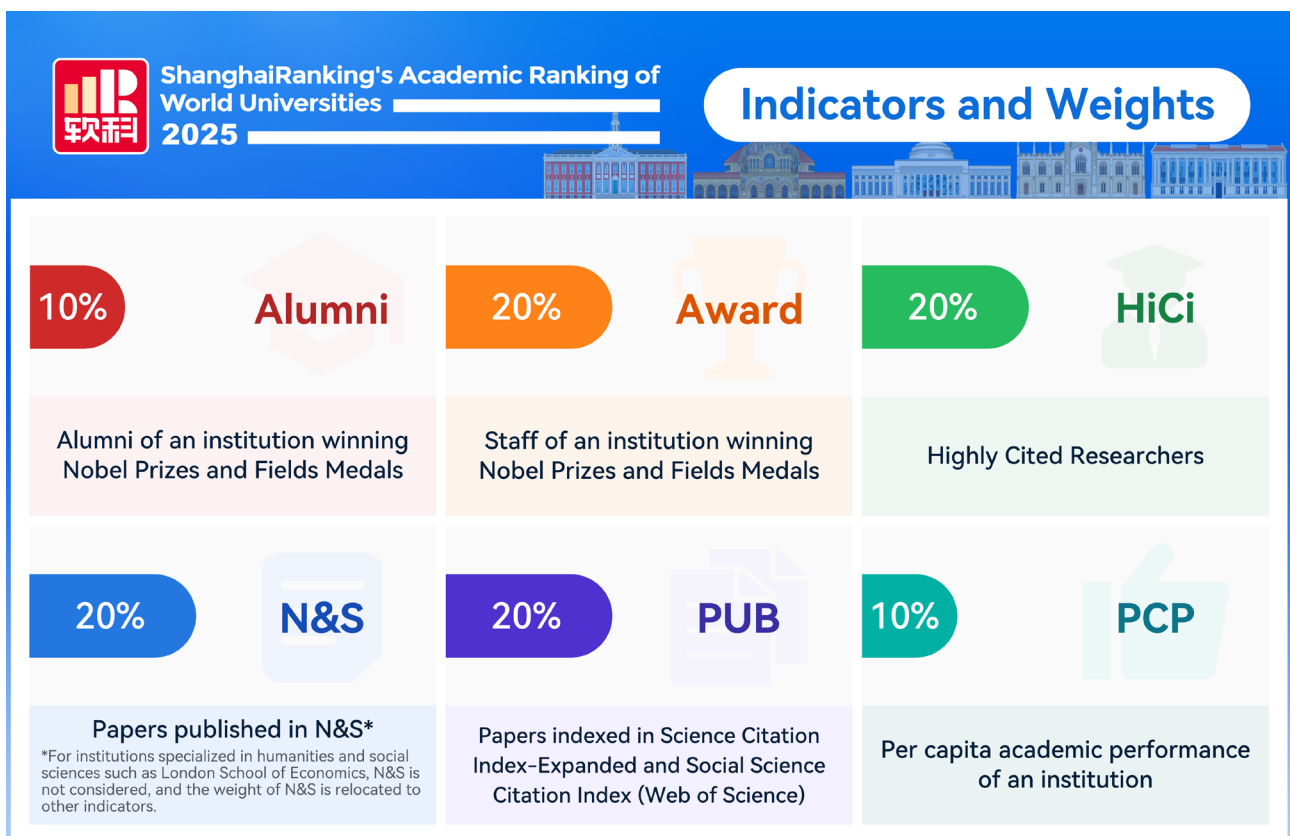
Candidate Universities

ARWU considers every university that has any Nobel Laureates, Fields Medalists, Highly Cited Researchers selected by Clarivate, or papers published in *Nature* or *Science*. In addition, universities with a significant amount of papers indexed in the Science Citation Index–Expanded (SCIE) and Social Science Citation Index (SSCI) in the Web of Science are also included. In total, more than 2500 universities are actually ranked, and the best 1000 are published.

Ranking Criteria and Weights

Universities are ranked by several academic or research performance indicators, including alumni and staff winning Nobel Prizes and Fields Medals, Highly Cited Researchers, papers published in *Nature* and *Science*, papers indexed in major citation indices, and the per capita academic performance of an institution. For each indicator, the highest scoring institution is assigned a score of 100, and other institutions are calculated as a percentage of the top score. The data distribution for each indicator is examined for any significant distorting effect; standard statistical techniques are used to adjust the indicator if necessary. Scores for each indicator are weighted as shown below to arrive at a final overall score for an institution. The highest scoring institution is assigned a score of 100, and other institutions are calculated as a percentage of the top score.

Indicators and Weights for ARWU



Alumni



Number of the alumni of an institution winning Nobel Prizes and Fields Medals. Alumni are defined as those who obtain bachelor's, master's or doctoral degrees from the institution. Different weights are set according to the periods of obtaining degrees. The weight is 100% for alumni obtaining degrees after 2011, 90% for alumni obtaining degrees in 2001–2010, 80% for alumni obtaining degrees in 1991–2000, and so on, and finally 10% for alumni obtaining degrees in 1921–1930. If a person obtains more than one degree from an institution, the institution is considered once only.

Award



Number of the staff of an institution winning Nobel Prizes in Physics, Chemistry, Medicine and Economics and Fields Medal in Mathematics. Staff is defined as those who work at an institution at the time of winning the prize. Different weights are set according to the periods of winning the prizes. The weight is 100% for winners after 2021, 90% for winners in 2011–2020, 80% for winners in 2001–2010, 70% for winners in 1991–2000, and so on, and finally 10% for winners in 1931–1940. If a winner is affiliated with more than one institution, each institution is assigned the reciprocal of the number of institutions. For Nobel prizes, if a prize is shared by more than one person, weights are set for winners according to their proportion of the prize.

HiCi



Number of Highly Cited Researchers selected by the Institute for Scientific Information at Clarivate. The Highly Cited Researchers list issued in November 2024 was used for the calculation of HiCi indicator in ARWU 2025. If a Highly Cited Researcher receives recognition in more than one ESI fields, each field is counted separately. Only the primary affiliations of Highly Cited Researchers are considered.

N&S



Number of research articles published in *Nature* and *Science* between 2020 and 2024. To distinguish the order of author affiliation, a weight of 100% is assigned for corresponding author affiliation, 50% for first author affiliation (second author affiliation if the first author affiliation is the same as corresponding author affiliation), 25% for the next author affiliation, and 10% for other author affiliations. When there are more than one corresponding author addresses, we consider the first corresponding author address as the corresponding author address and consider other corresponding author addresses as first author address, second author address etc. following the order of the author addresses. Only publications of 'Article' type are considered.

PUB



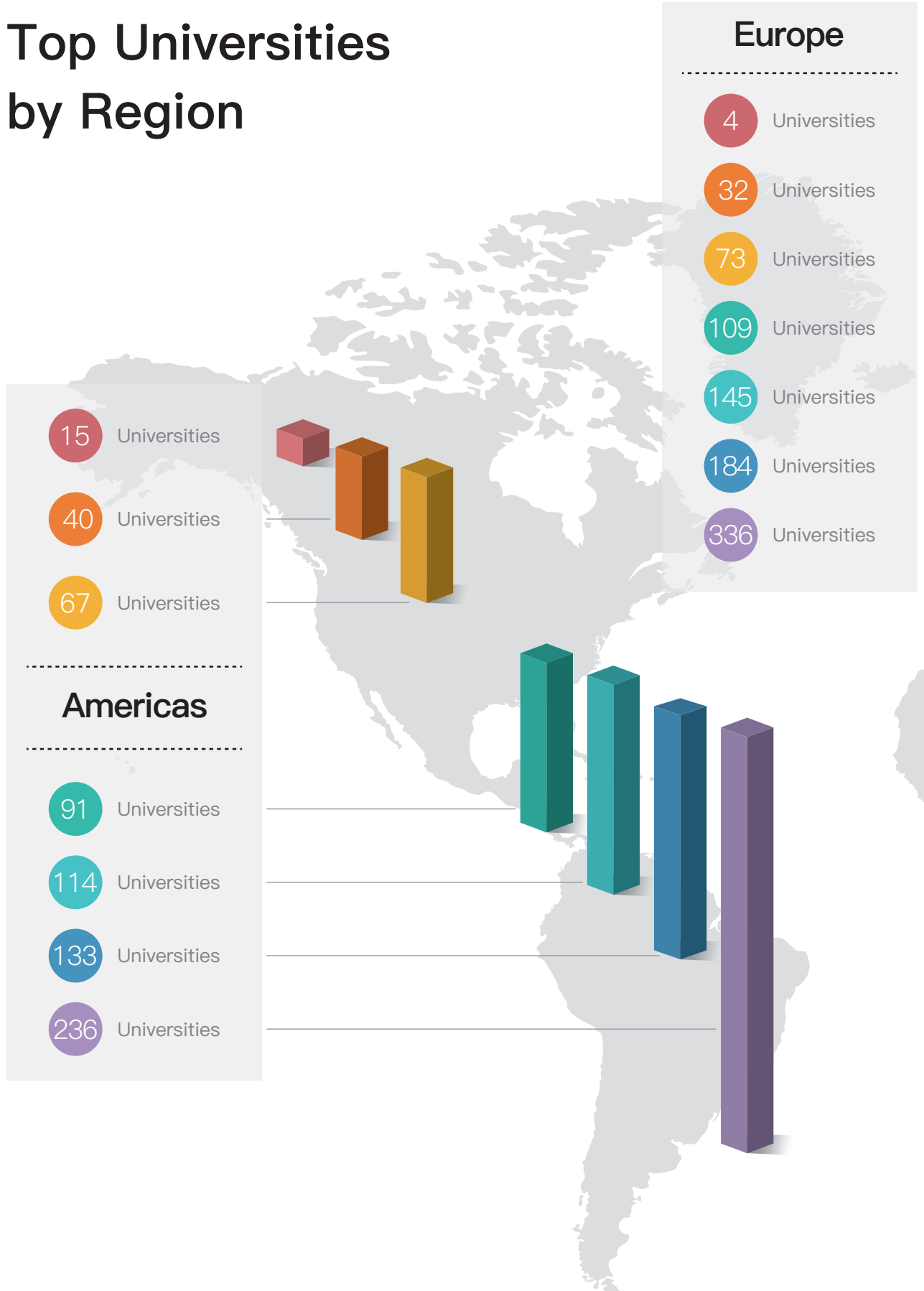
Number of papers indexed in Science Citation Index–Expanded and Social Science Citation Index (Web of Science) in 2024. Only publications of 'Article' type are considered. When calculating the total number of papers of an institution, a special weight of two was introduced for papers indexed in Social Science Citation Index.

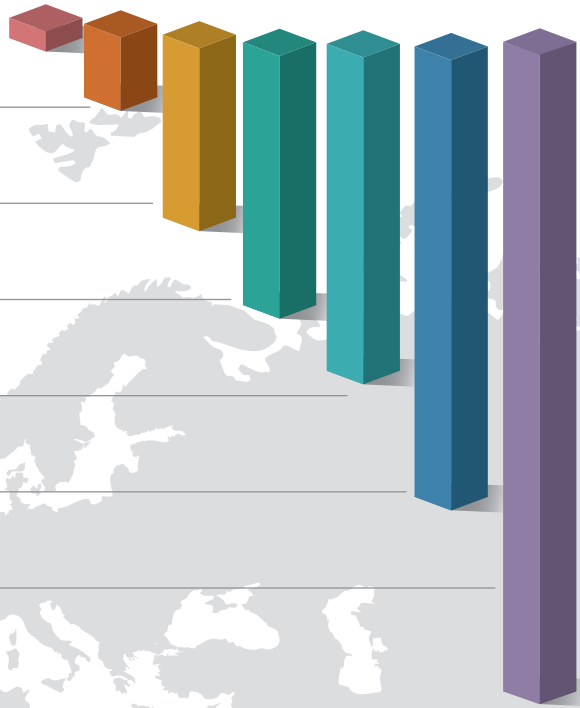
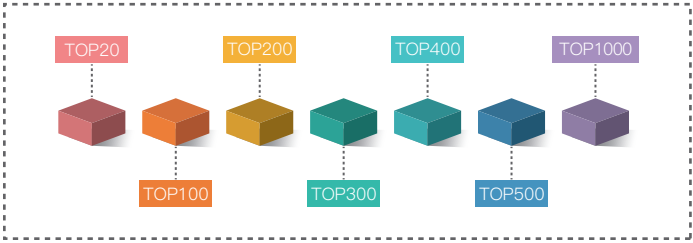
PCP



Weighted scores of the above five indicators divided by the number of full-time equivalent academic staff. If the number of academic staff for institutions of a country cannot be obtained, the average number of academic staff for world top 1000 universities will be used for all institutions in this country. For ARWU 2025, the numbers of full-time equivalent academic staff are obtained for institutions in USA, UK, China, France, Germany, Canada, Japan, Italy, Australia, Netherlands, Sweden, Switzerland, Belgium, South Korea, Czechia, New Zealand, Saudi Arabia, Spain, Austria, Norway, Poland, Israel etc.

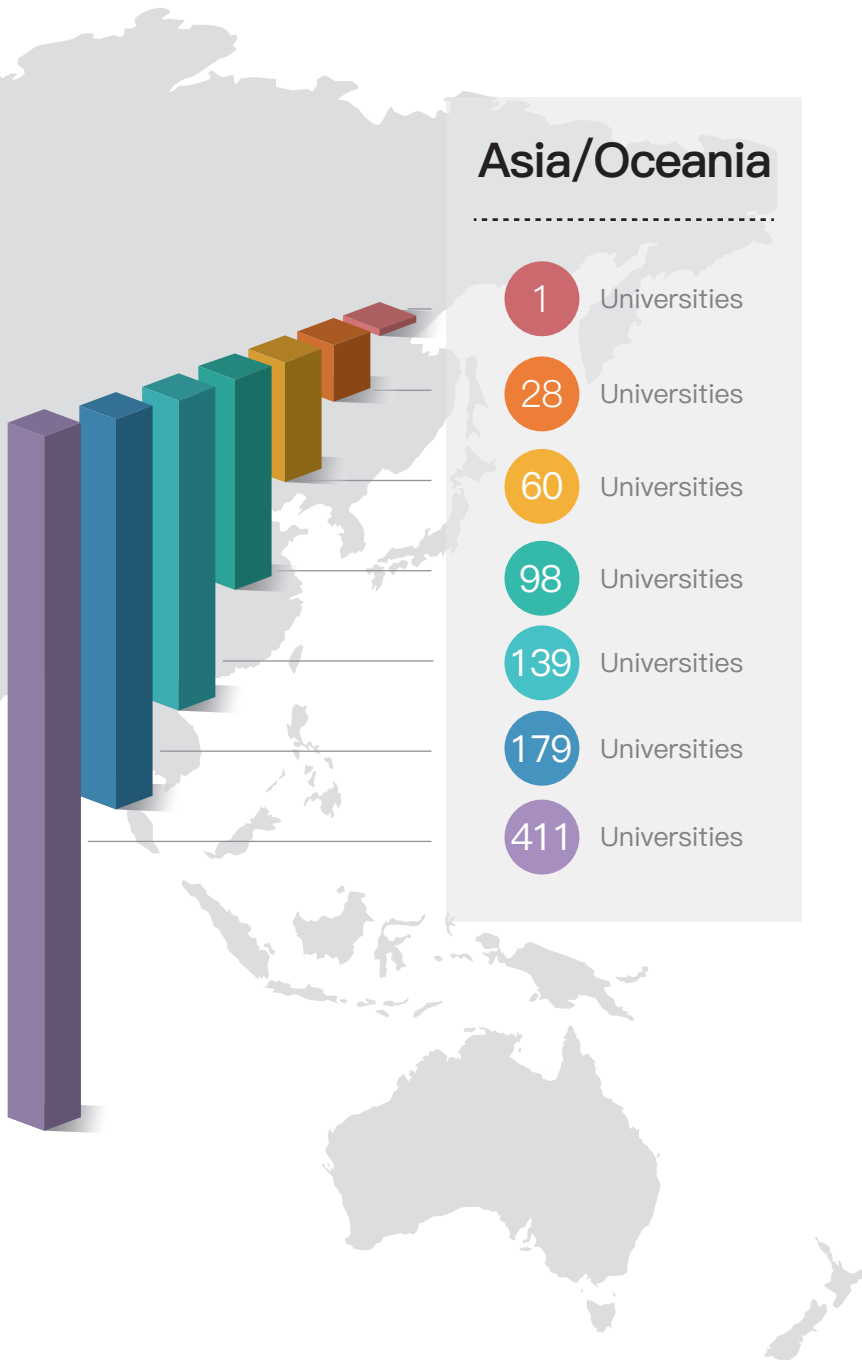
Number of Top Universities by Region





Africas

- 2 Universities
- 2 Universities
- 4 Universities
- 17 Universities



Asia/Oceania

- 1 Universities
- 28 Universities
- 60 Universities
- 98 Universities
- 139 Universities
- 179 Universities
- 411 Universities

Number of Top Universities by Country / Region

Country/Region	Top 20	Top 100	Top 200	Top 300	Top 400	Top 500	Top 1000
United States	15	37	58	78	96	111	183
United Kingdom	3	8	18	26	32	37	61
China	1	15	39	60	89	113	244
China–Mainland	1	13	35	54	82	101	222
China–Hong Kong	0	2	4	5	5	5	8
China–Taiwan	0	0	0	1	1	5	12
China–Macau	0	0	0	0	1	2	2
France	1	4	8	12	14	18	27
Australia	0	5	8	13	20	24	29
Switzerland	0	5	7	7	7	7	9
Germany	0	4	11	21	27	35	51
Canada	0	3	8	10	15	17	28
Sweden	0	3	5	6	8	10	14
Israel	0	3	3	4	5	5	7
Netherlands	0	2	9	9	11	11	13
Japan	0	2	4	10	10	13	29
Belgium	0	2	3	4	6	7	7
Denmark	0	2	3	3	5	5	6
Singapore	0	2	2	2	2	2	2
South Korea	0	1	3	6	9	12	30
Norway	0	1	2	3	3	3	5
Finland	0	1	1	1	1	4	7
Italy	0	0	3	7	12	18	41
Austria	0	0	1	4	4	6	10
Spain	0	0	1	2	8	10	36
Saudi Arabia	0	0	1	2	3	4	13
Brazil	0	0	1	1	1	3	18
Russia	0	0	1	1	1	2	7
South Africa	0	0	0	2	2	3	8
Portugal	0	0	0	2	2	3	7
Ireland	0	0	0	1	3	3	7
New Zealand	0	0	0	1	1	4	7
Mexico	0	0	0	1	1	1	2
Argentina	0	0	0	1	1	1	1
Czech Republic	0	0	0	0	1	2	5
Iran	0	0	0	0	0	2	6
Poland	0	0	0	0	0	1	7
Egypt	0	0	0	0	0	1	6
Hungary	0	0	0	0	0	1	4
Serbia	0	0	0	0	0	1	1
India	0	0	0	0	0	0	15
Turkey	0	0	0	0	0	0	11
United Arab Emirates	0	0	0	0	0	0	4
Pakistan	0	0	0	0	0	0	4
Malaysia	0	0	0	0	0	0	4
Greece	0	0	0	0	0	0	4
Thailand	0	0	0	0	0	0	3
Colombia	0	0	0	0	0	0	2
Chile	0	0	0	0	0	0	2
Ethiopia	0	0	0	0	0	0	1
Estonia	0	0	0	0	0	0	1
Iceland	0	0	0	0	0	0	1
Ghana	0	0	0	0	0	0	1
Qatar	0	0	0	0	0	0	1
Croatia	0	0	0	0	0	0	1
Lebanon	0	0	0	0	0	0	1
Lithuania	0	0	0	0	0	0	1
Luxembourg	0	0	0	0	0	0	1
Morocco	0	0	0	0	0	0	1
Cyprus	0	0	0	0	0	0	1
Slovakia	0	0	0	0	0	0	1
Slovenia	0	0	0	0	0	0	1
Total	20	100	200	300	400	500	1000

ShanghaiRanking Consultancy is a fully independent organization dedicating to research on higher education intelligence and consultation. It has been the official publisher of the Academic Ranking of World Universities since 2009.